



Symmetry-Guided Texture Synthesis and Manipulation

Vladimir G. Kim

Princeton
University

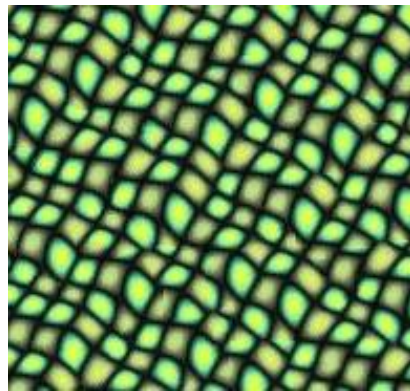
Yaron Lipman

Weizmann
Institute

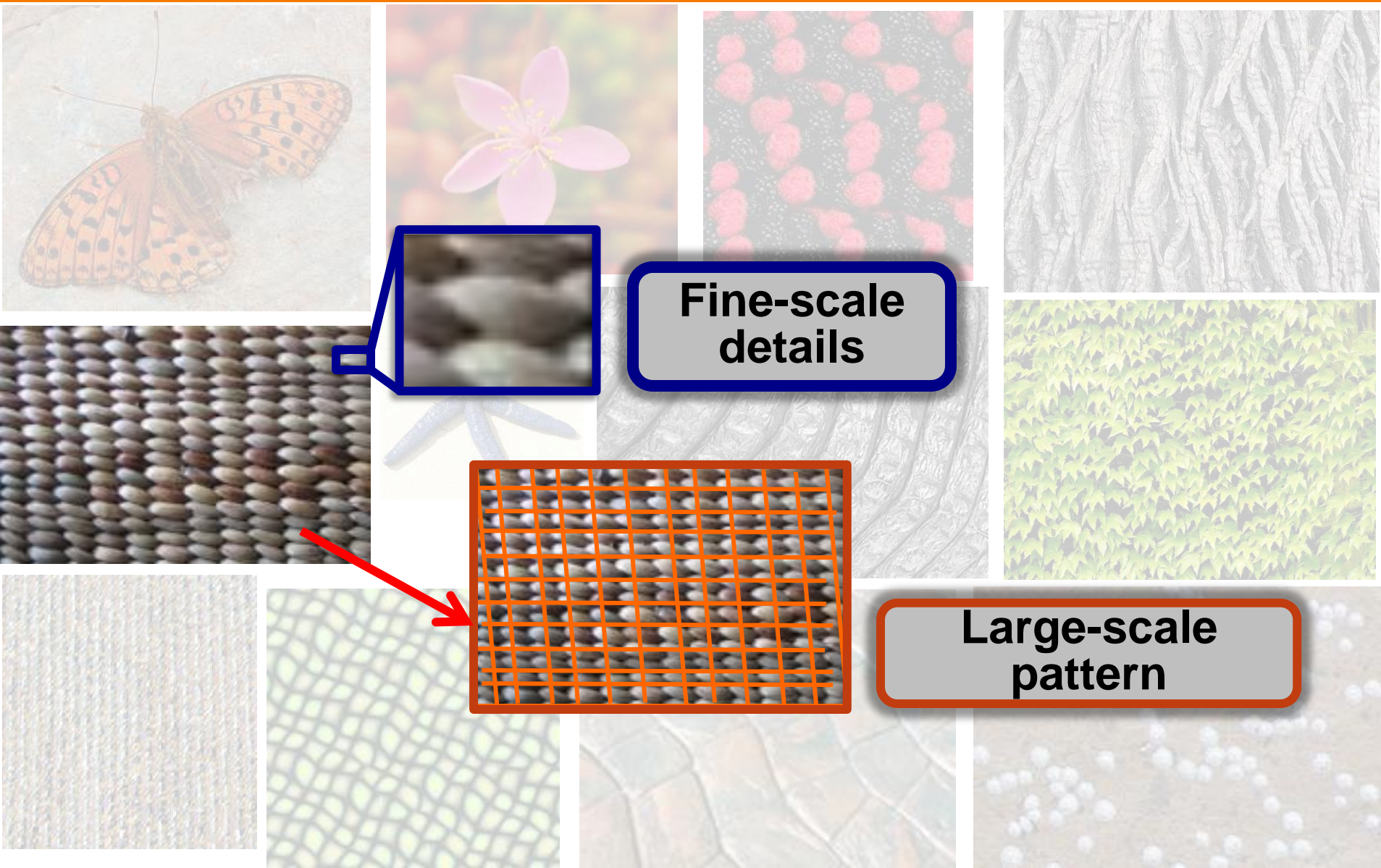
Thomas Funkhouser

Princeton
University

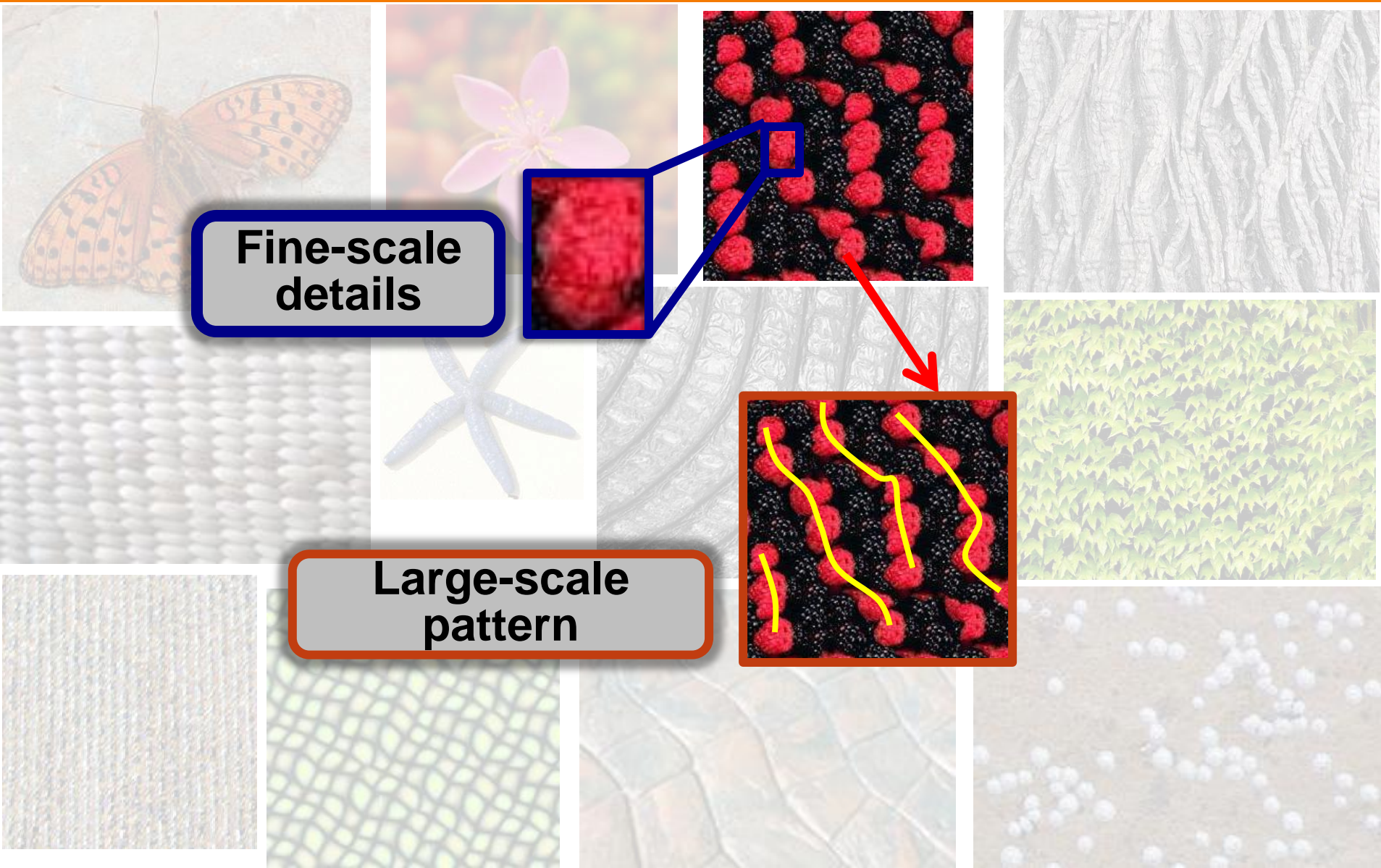
Motivation



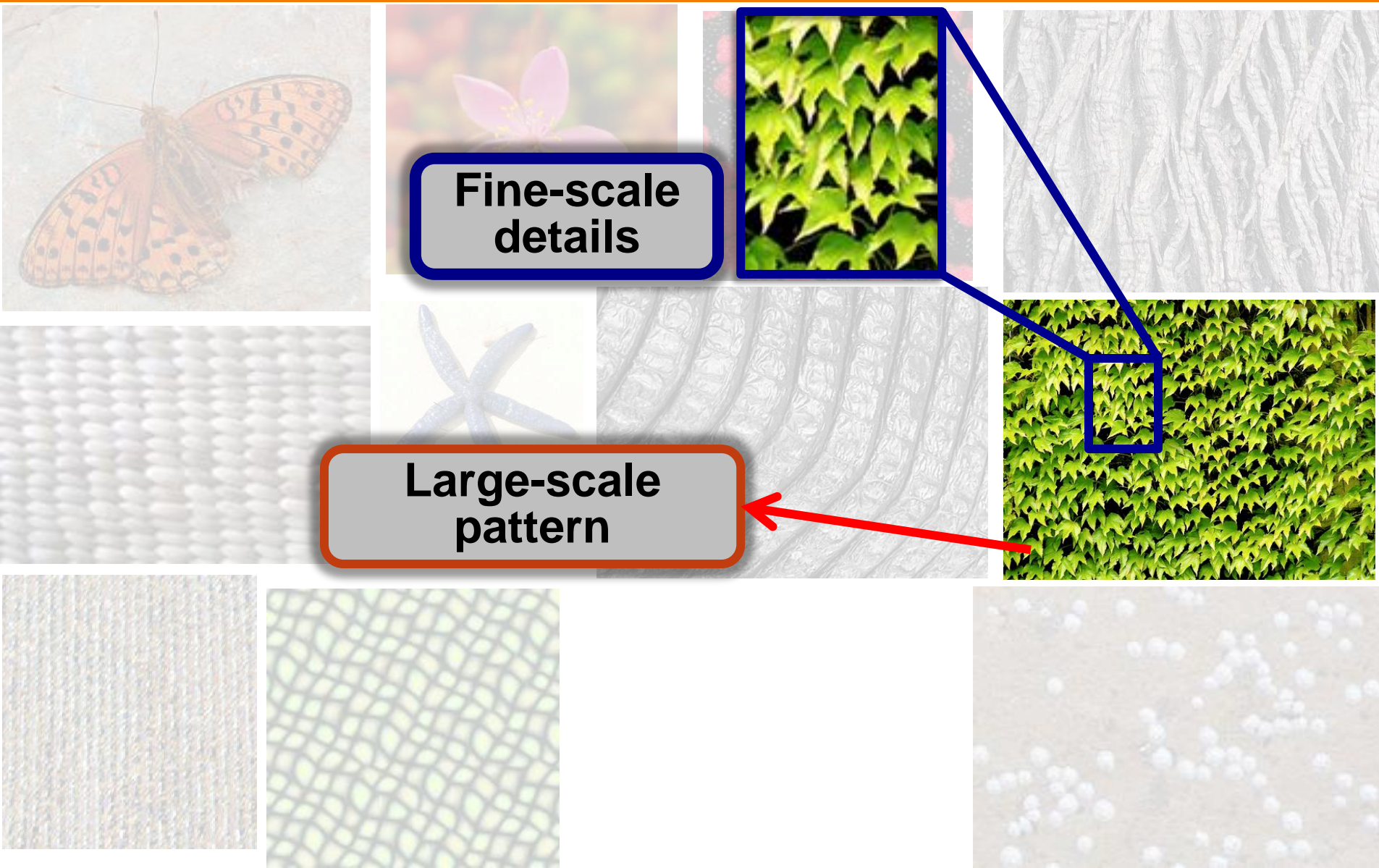
Motivation



Motivation



Motivation



Goal

Control large-scale patterns while preserving fine-scale details

- Synthesize textures with desirable patterns
- Manipulate patterns in textures and images

Related Work

Analyzing, manipulating, and synthesizing textures

- Texture Synthesis
- Near-Regular Textures
- Symmetry Detection

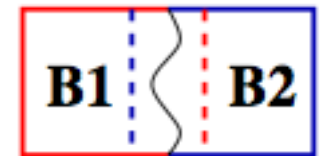
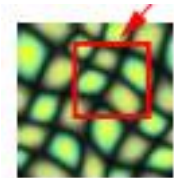
Related Work

Analyzing, manipulating, and synthesizing textures

➤ **Texture Synthesis**

- Near-Regular Textures
- Symmetry Detection

Patch-based
synthesis



Efros and Lleung '99
Efros and Freeman '01,
Kwatra et al. '03,
Kwatra et al. '05,
Lefebvre et al. '10

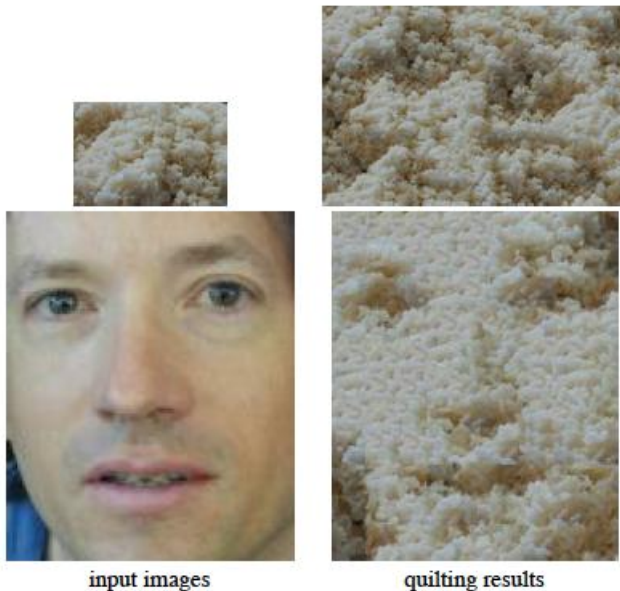
Related Work

Analyzing, manipulating, and synthesizing textures

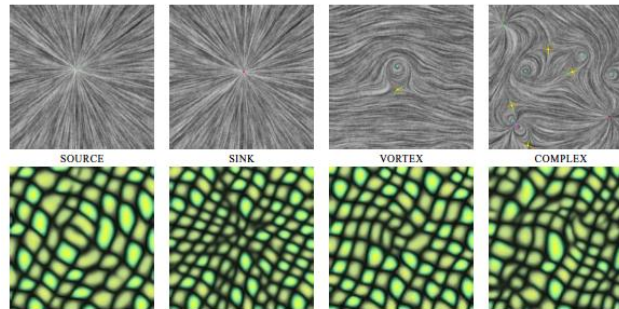
➤ **Texture Synthesis**

- Near-Regular Textures
- Symmetry Detection

Additional Objectives

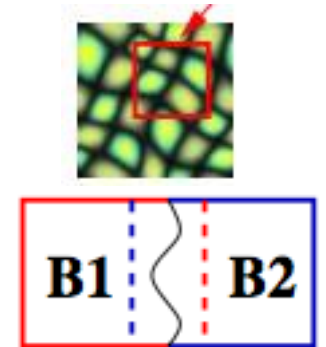


Texture Transfer



Flow-field Guided

Patch-based synthesis



Efros and Lleung '99
Efros and Freeman '01,
Kwatra et al. '03,
Kwatra et al. '05,
Lefebvre et al. '10



Interactive Merging

Related Work

Analyzing, manipulating, and synthesizing textures

- Texture Synthesis
- Near-Regular Textures
- Symmetry Detection



Near-Regular Texture Analysis and Manipulation. *Liu et al. '04*



Image De-Fencing. *Liu et al. '08, Park et al. '10*

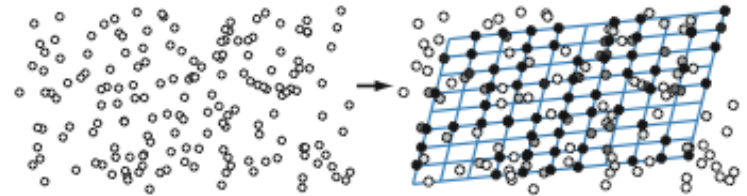
Related Work

Analyzing, manipulating, and synthesizing textures

- Texture Synthesis
- Near-Regular Textures
- Symmetry Detection



Symmetry Detection from Real World Images. *Ingmar Rauschert, Kyle Brocklehurst, Somesh Kashyap, Jingchen Liu, Yanxi Liu, '12*



Partial and approximate symmetry detection...

Mitra et al. '06

Discovering Structural Regularity...

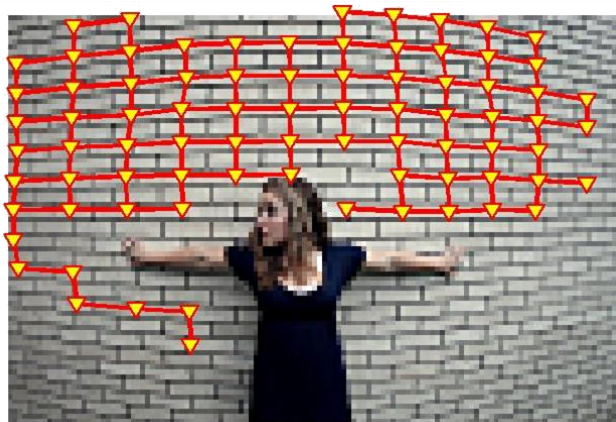
Pauly et al. '08

Related Work

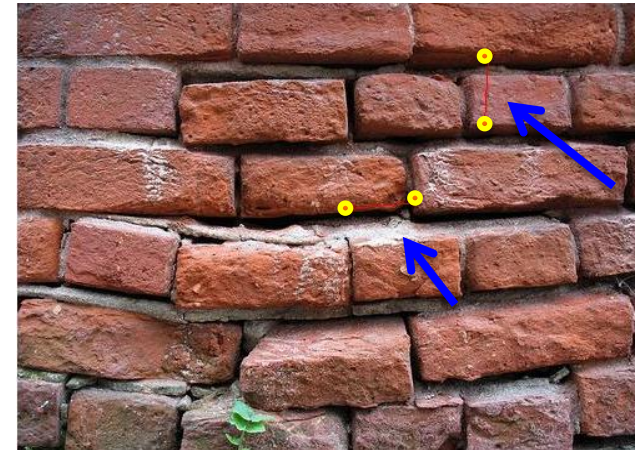
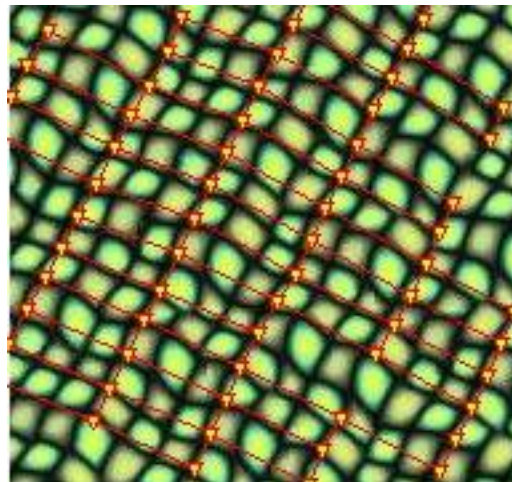
Analyzing, manipulating, and synthesizing textures

- Texture Synthesis
- Near-Regular Textures
- Symmetry Detection

Lattice detection is hard...



© cwazymandy



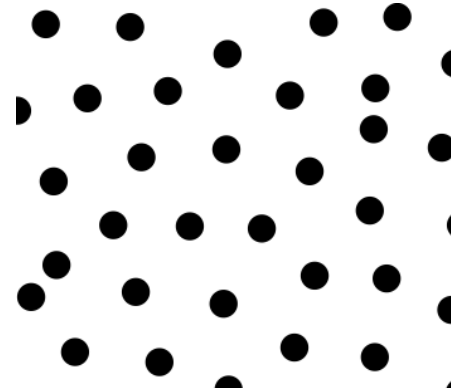
Deformed Lattice Detection... *Park et al. '09*,
Discovering Texture Regularity... *Hays et al. '06*

Related Work

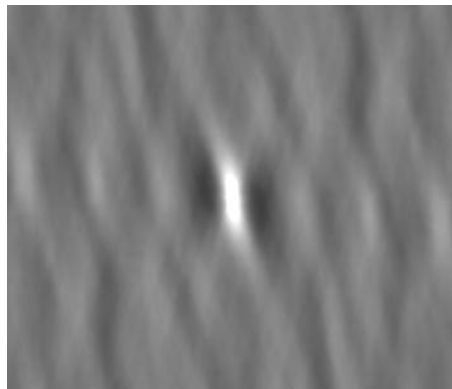
Analyzing, manipulating, and synthesizing textures

- Texture Synthesis
- Near-Regular Textures
- Symmetry Detection

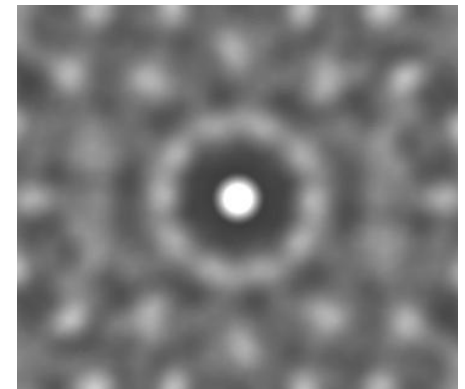
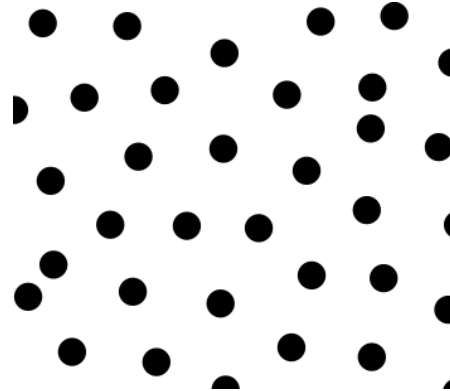
**Lattice detection is hard...
especially if there is none!**



Our Approach

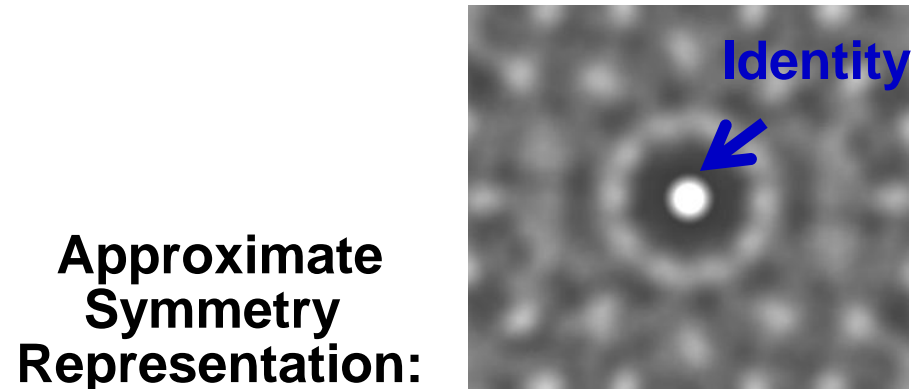
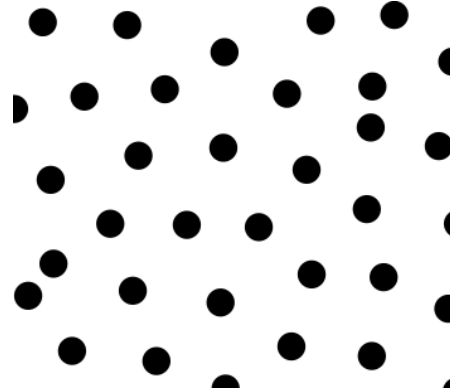
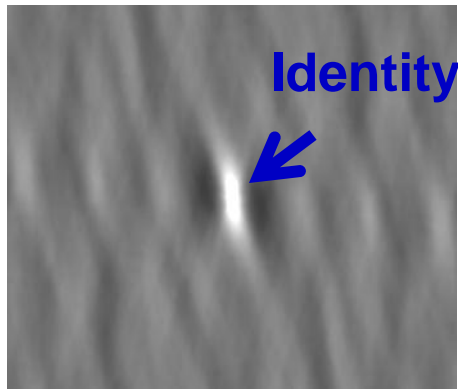


**Approximate
Symmetry
Representation:**

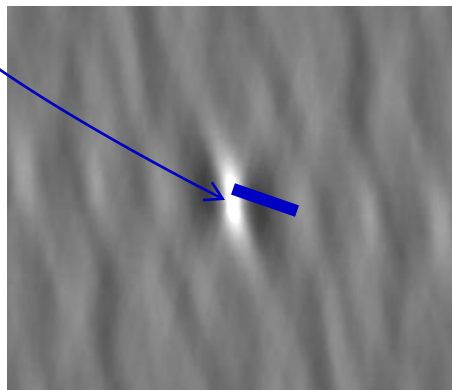
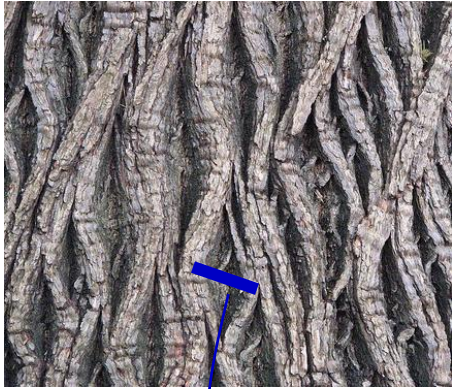


**Approximate
Symmetry
Representation:**

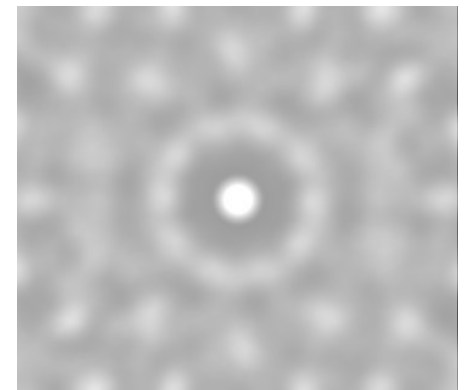
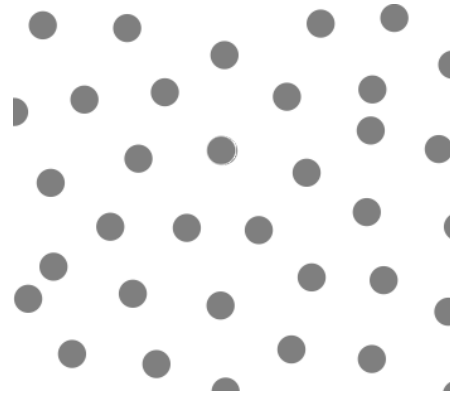
Our Approach



Our Approach

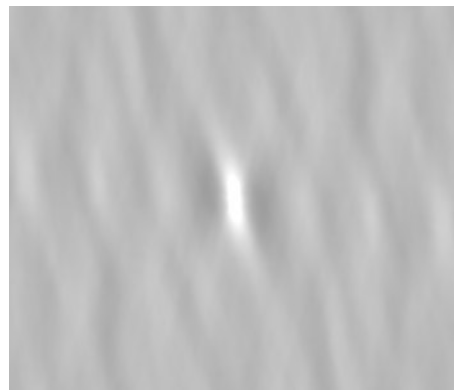


Approximate
Symmetry
Representation:

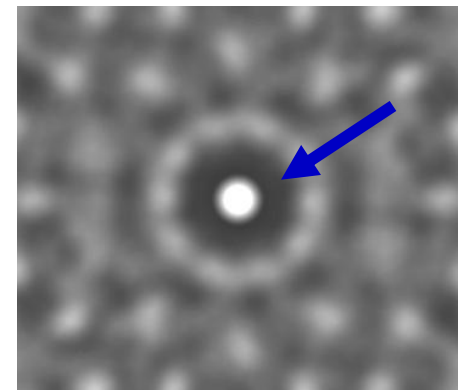
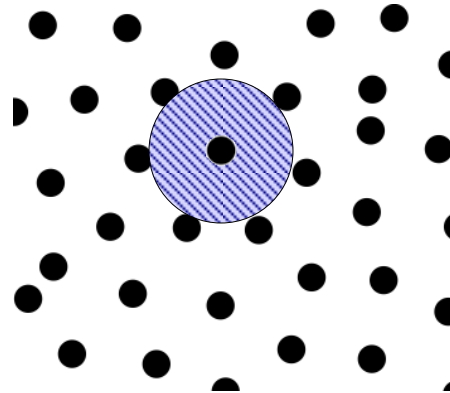


Approximate
Symmetry
Representation:

Our Approach

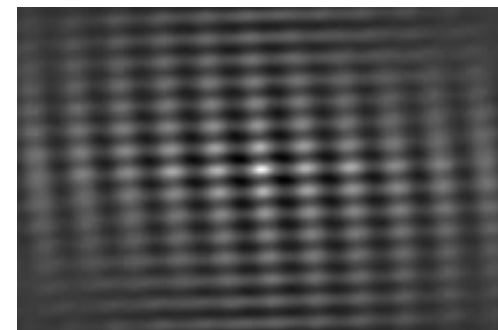
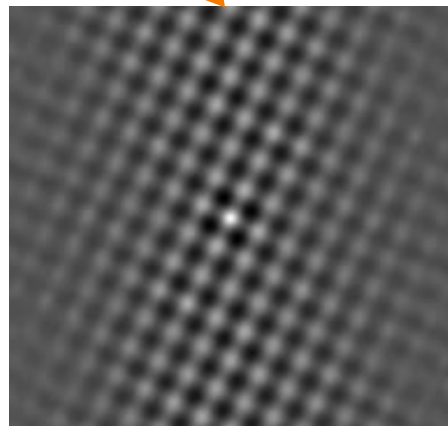
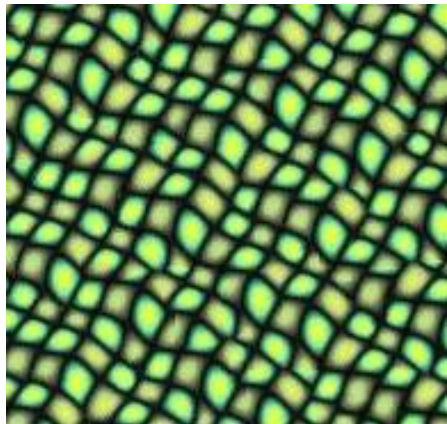


Approximate
Symmetry
Representation:



Approximate
Symmetry
Representation:

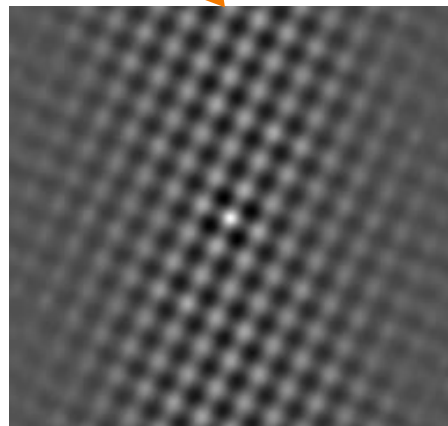
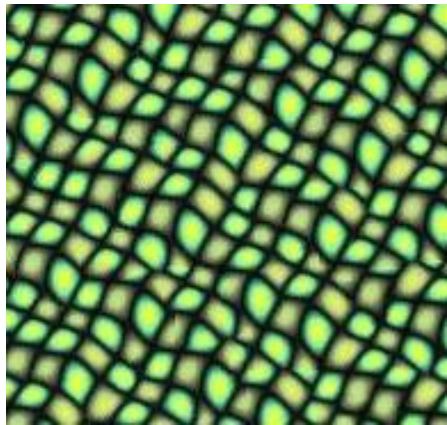
Our Approach



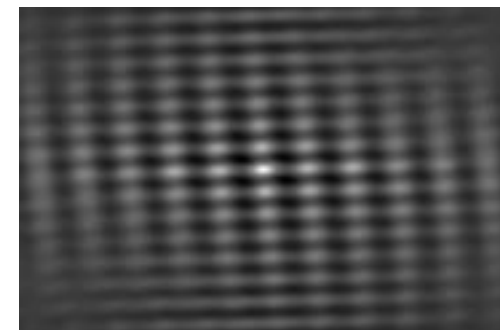
**Approximate
Symmetry
Representation:**

**Approximate
Symmetry
Representation:**

Our Approach



Approximate
Symmetry
Representation:

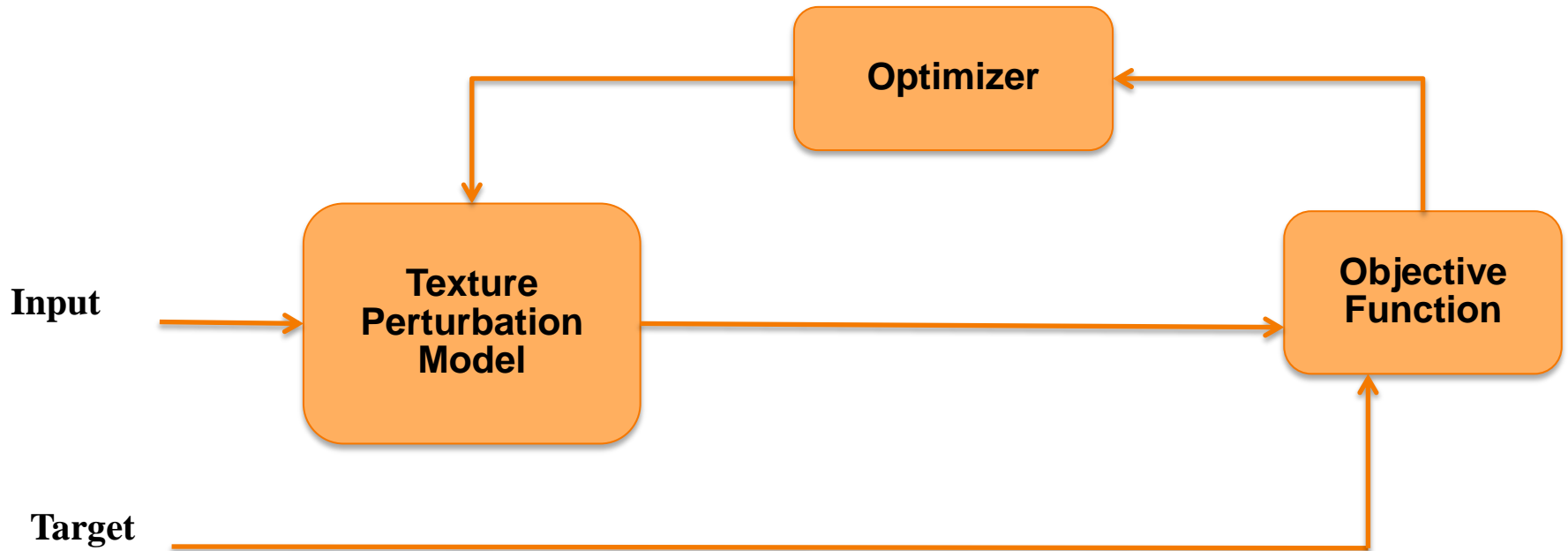


Approximate
Symmetry
Representation:

“Reflective symmetry descriptor”, *Kazhdan et al. 2003*,
“Planar reflective symmetry transform”, *Podolak et al. 2006*, ...

Typical Texture Synthesis Pipeline

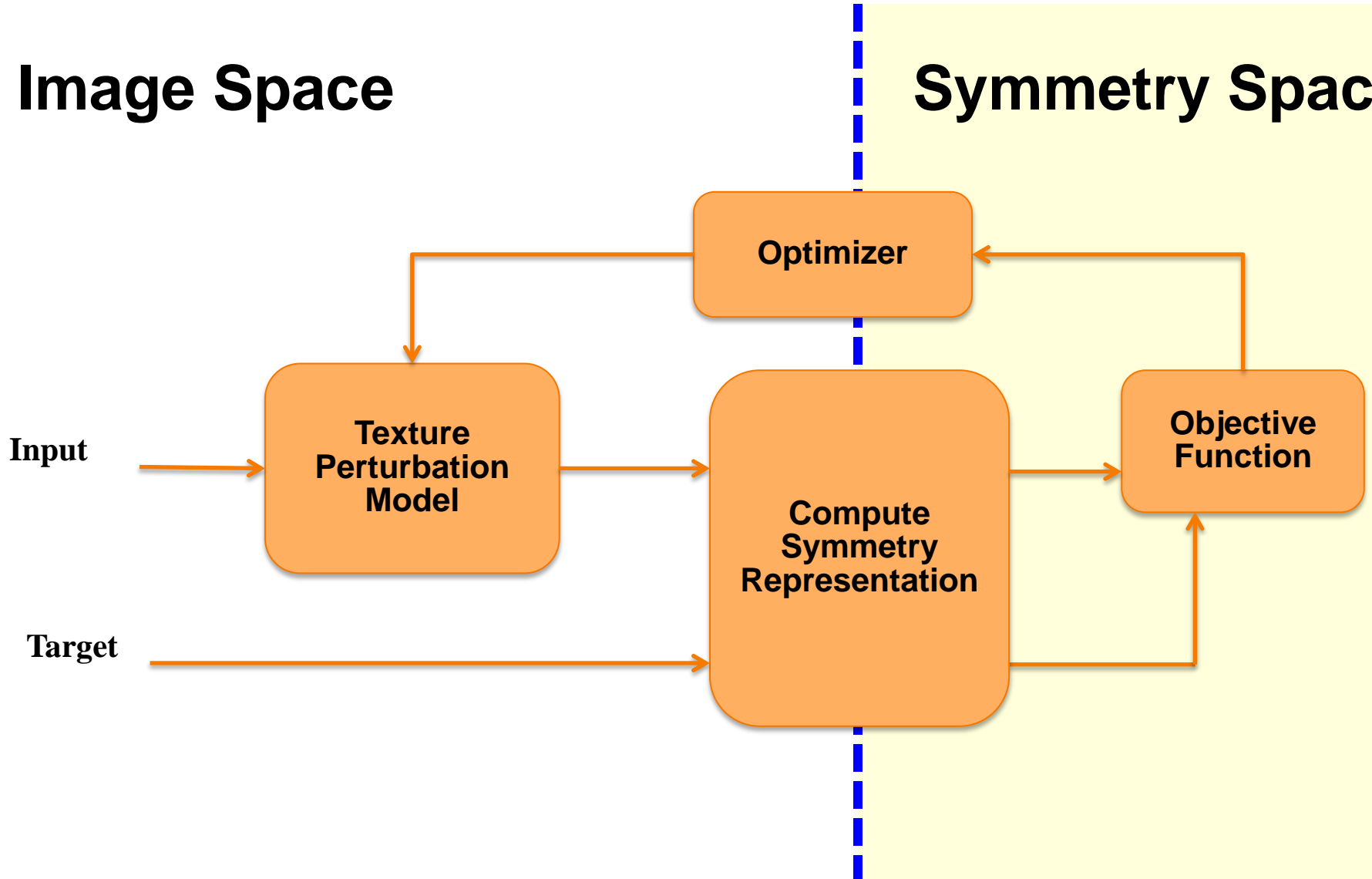
Image Space



Our Framework Overview

Image Space

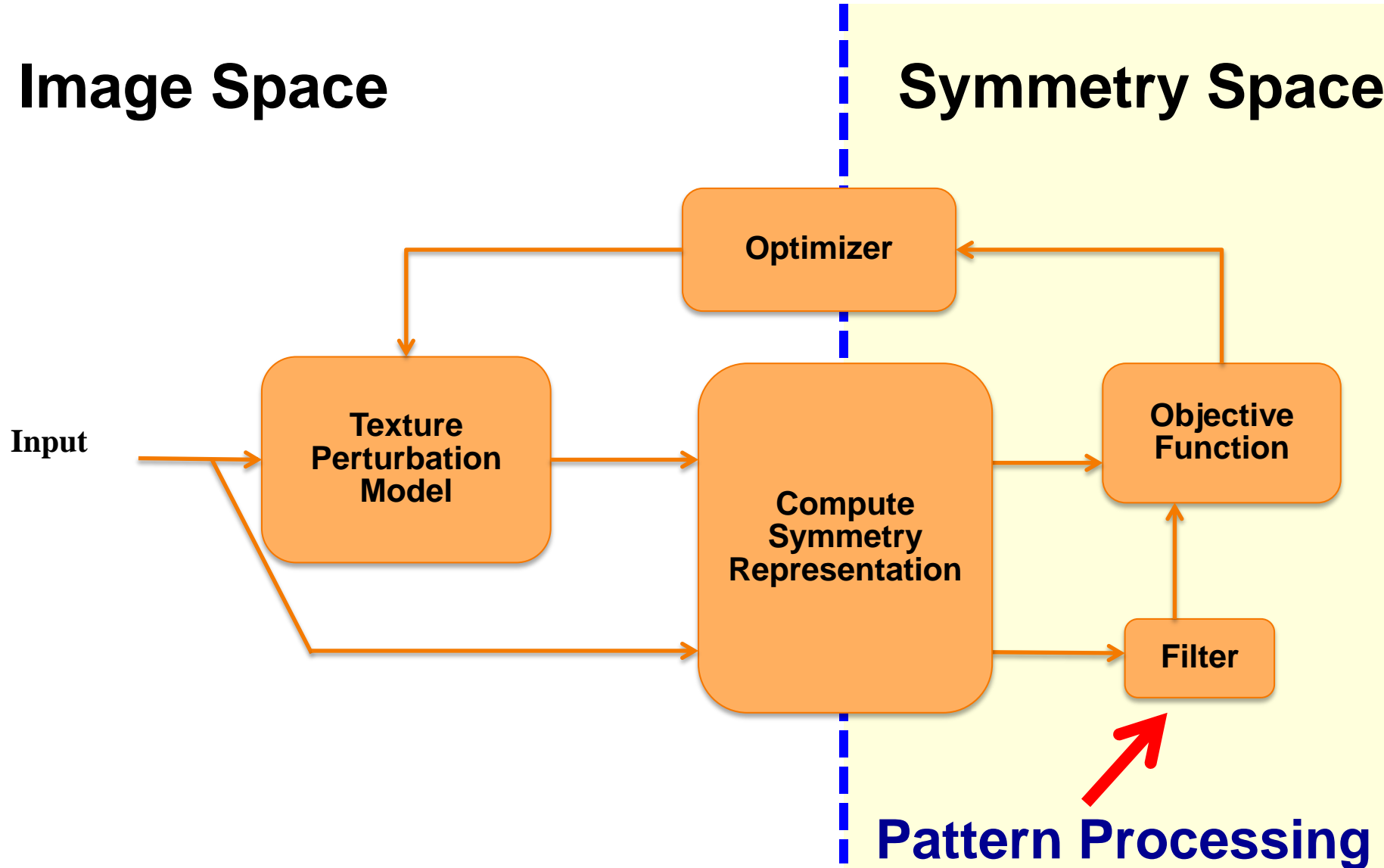
Symmetry Space



Pattern Processing

Image Space

Symmetry Space



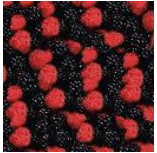
Pattern Processing: Goal

Filter the symmetry representation: e.g.

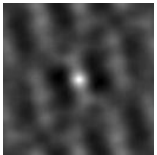
- Blur = make less symmetric
- Sharpen = make more symmetric
- Scale = scale pattern (same scale of texture details)
- ...

Pattern Processing: Scale

Input



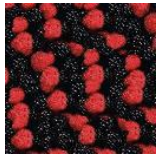
Image



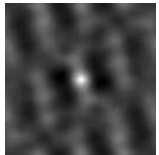
**Symmetry
Representation**

Pattern Processing: Scale

Input



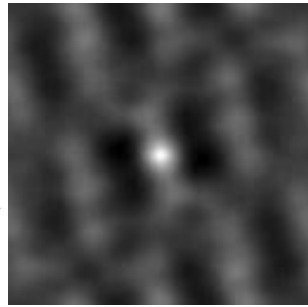
Image



Symmetry
Representation

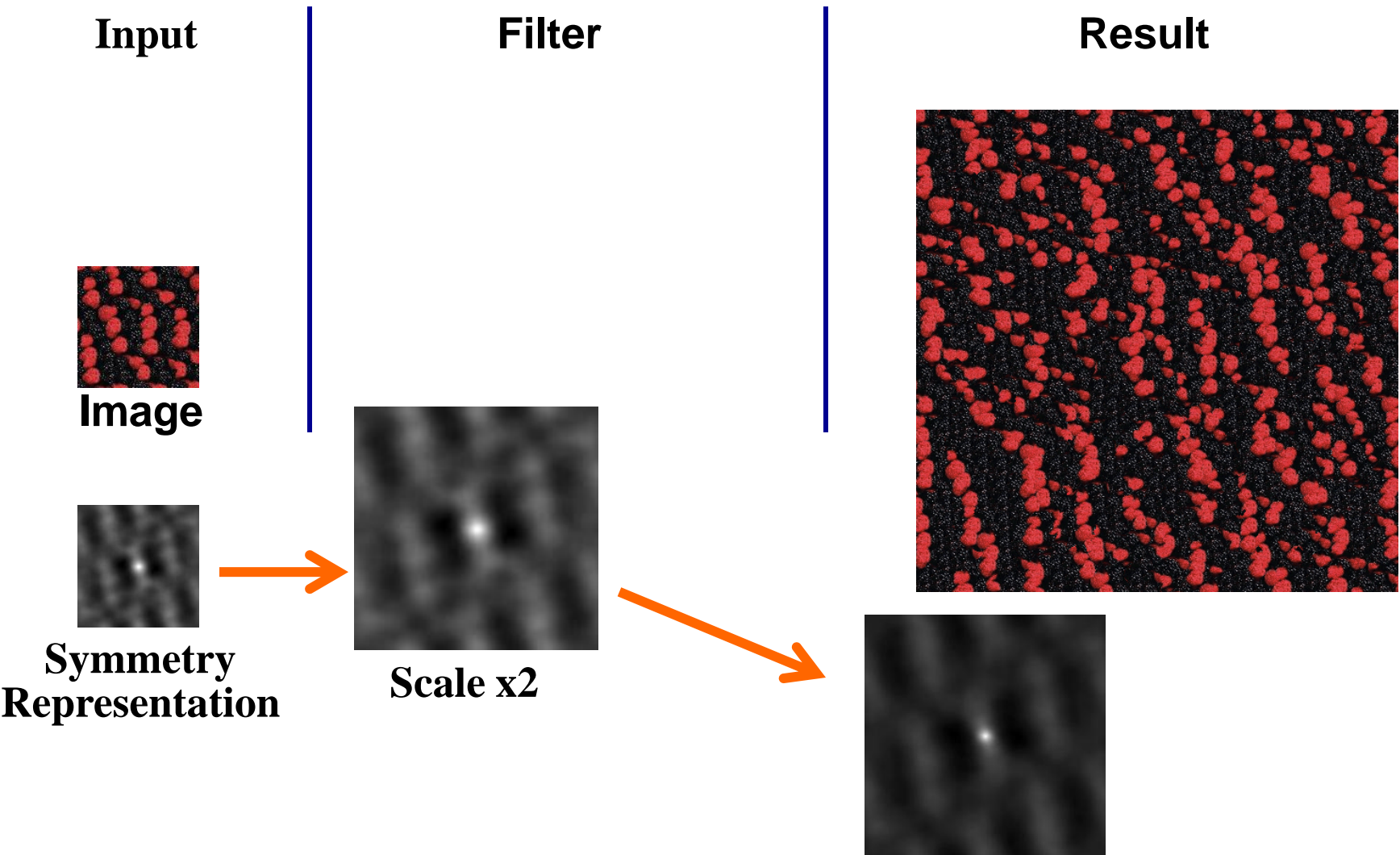


Filter

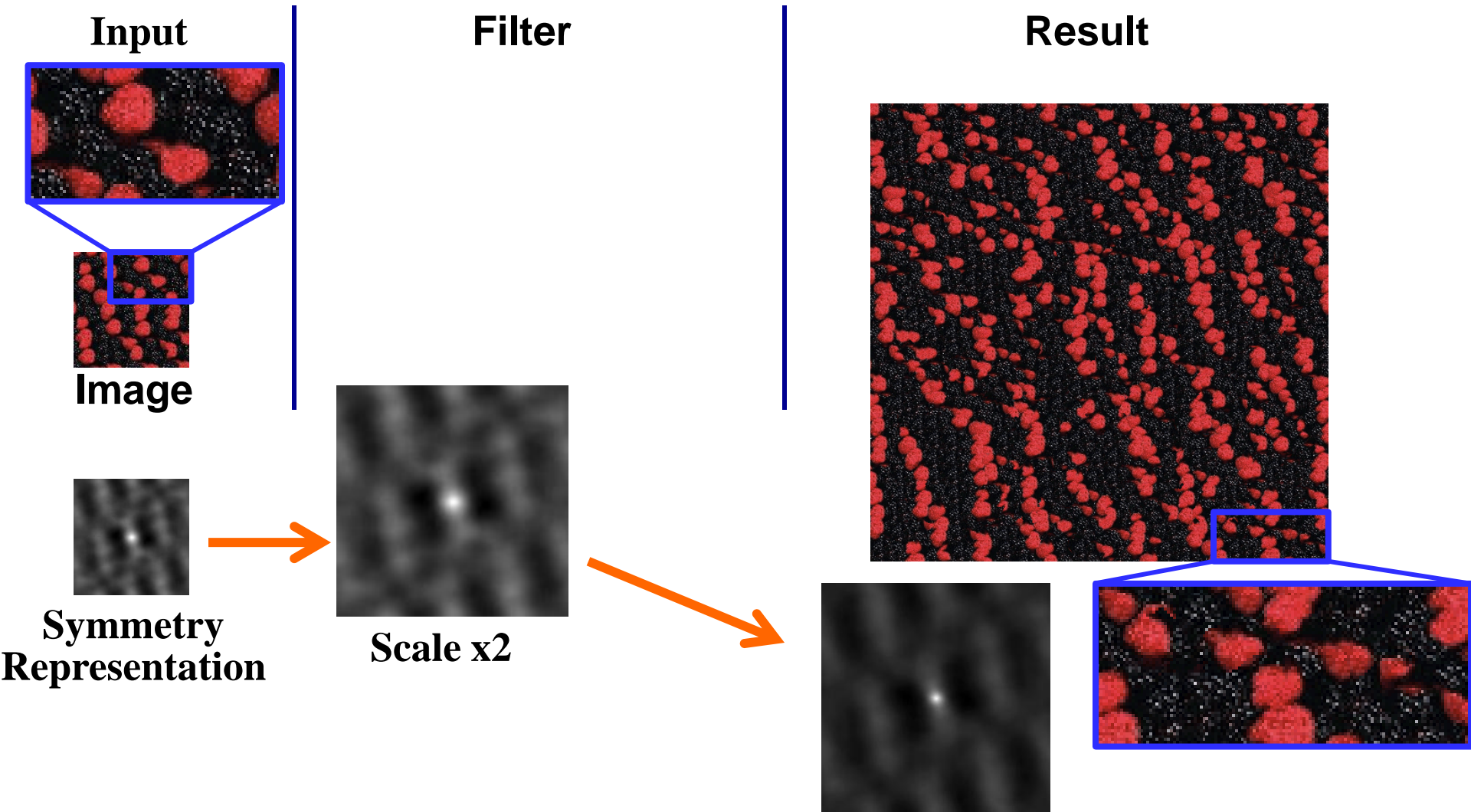


Scale x2

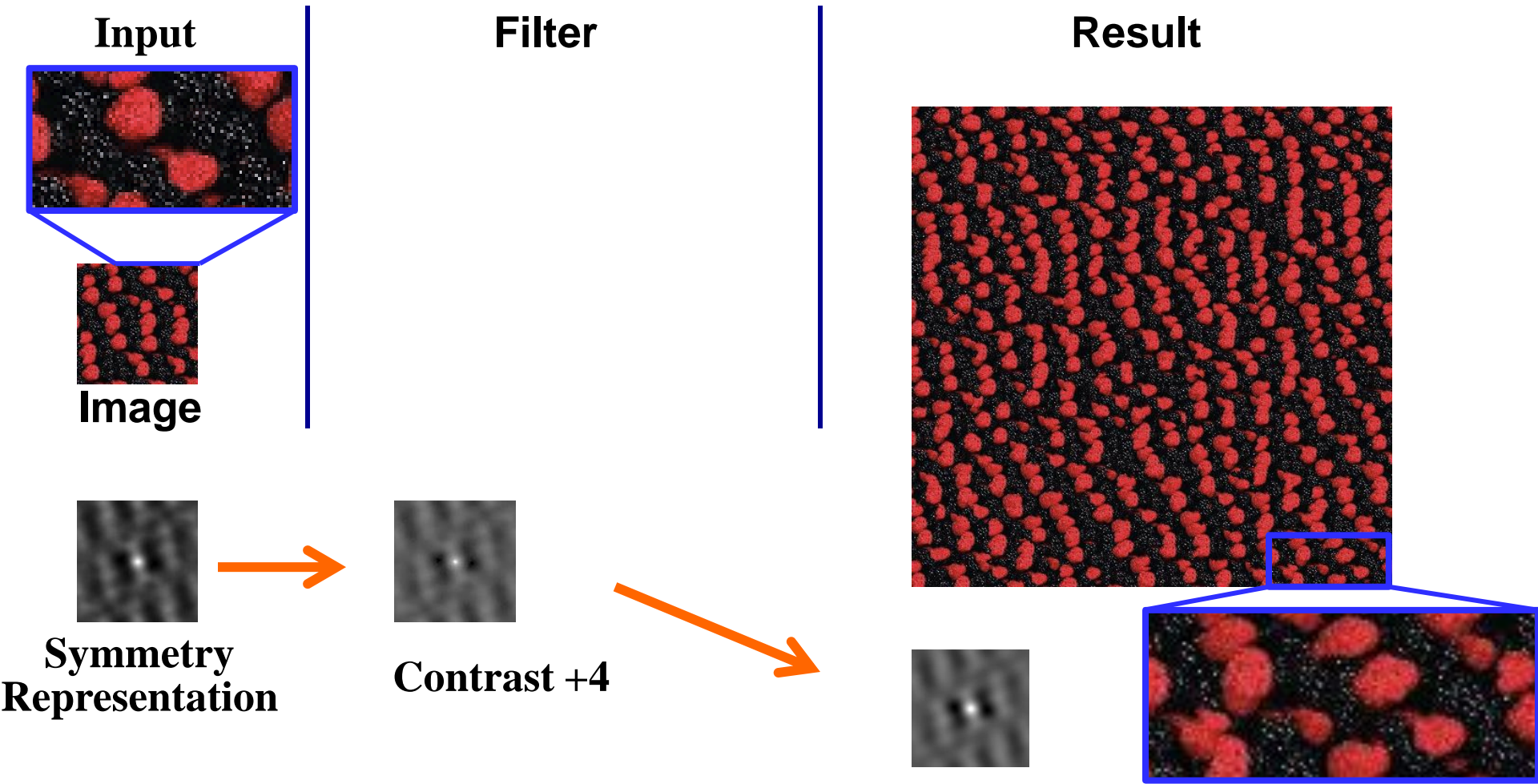
Pattern Processing: Scale



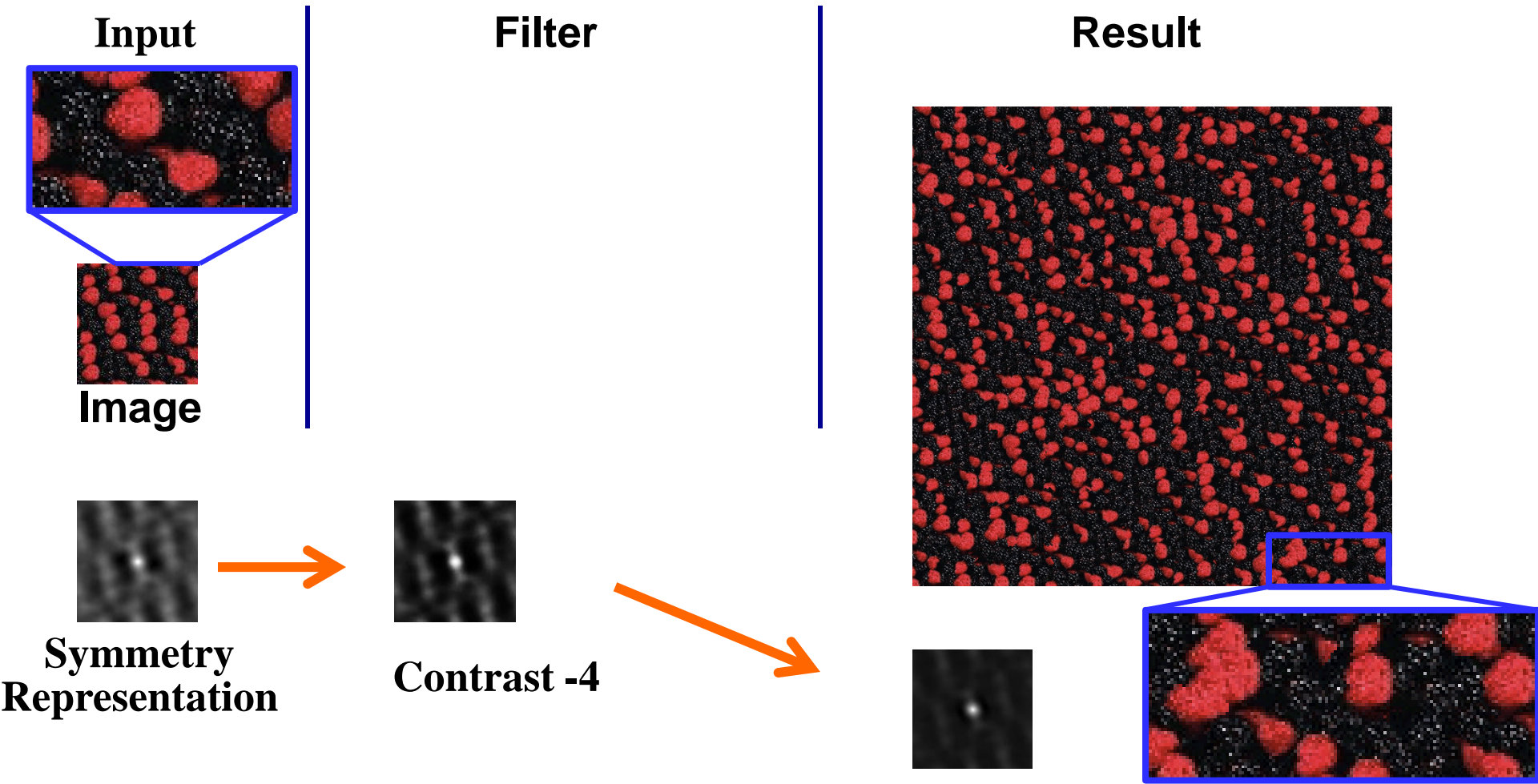
Pattern Processing: Scale



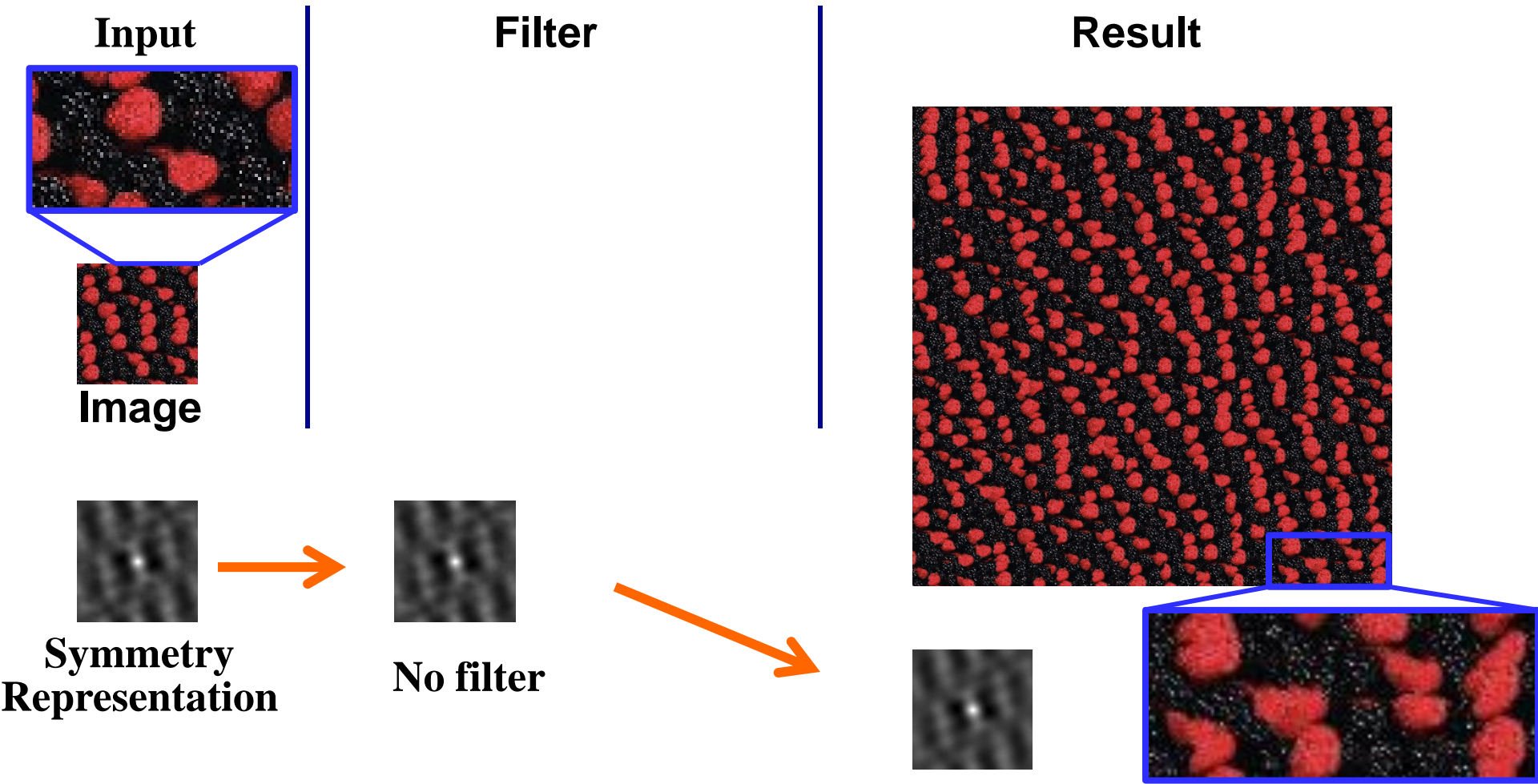
Pattern Processing: Reduce Contrast



Pattern Processing: Increase Contrast

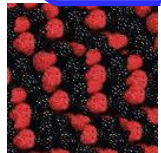
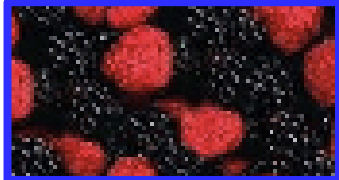


Pattern Processing: Identity

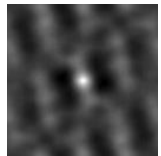


Pattern Processing: Identity

Input

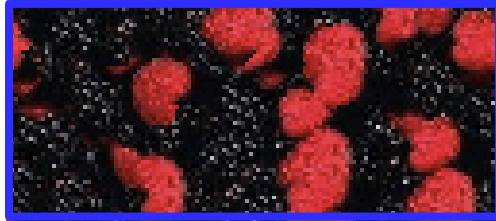
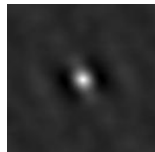
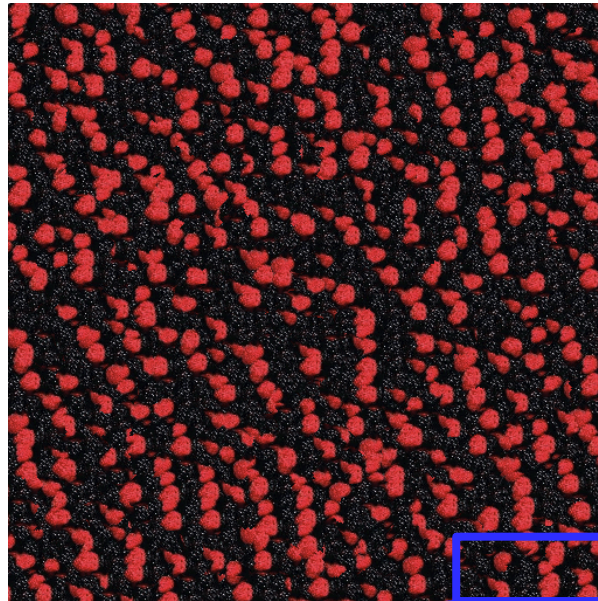


Image

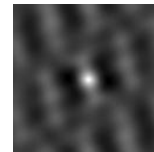
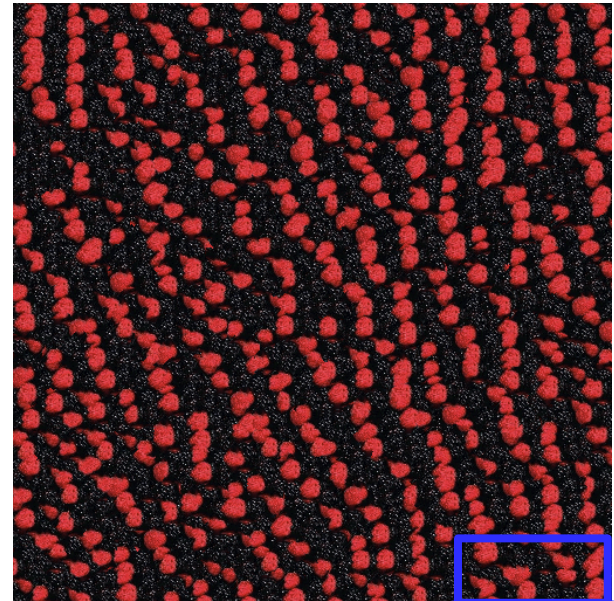


Symmetry
Representation

Not Symmetry-guided

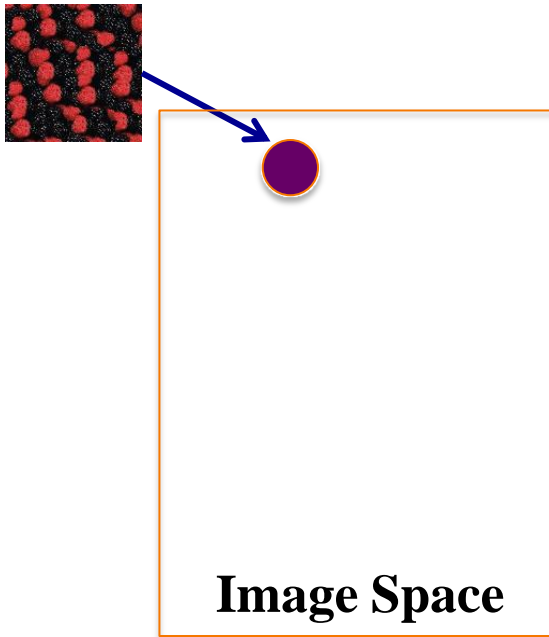


Result



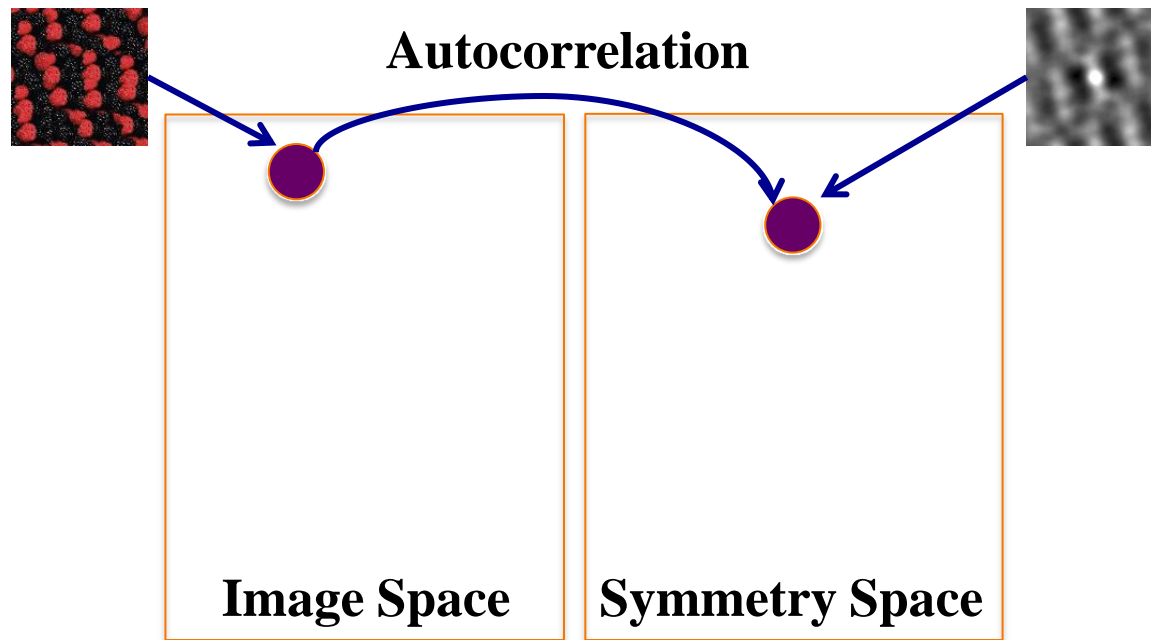
Optimization Example

Represent large-scale patterns with approximate symmetry representations



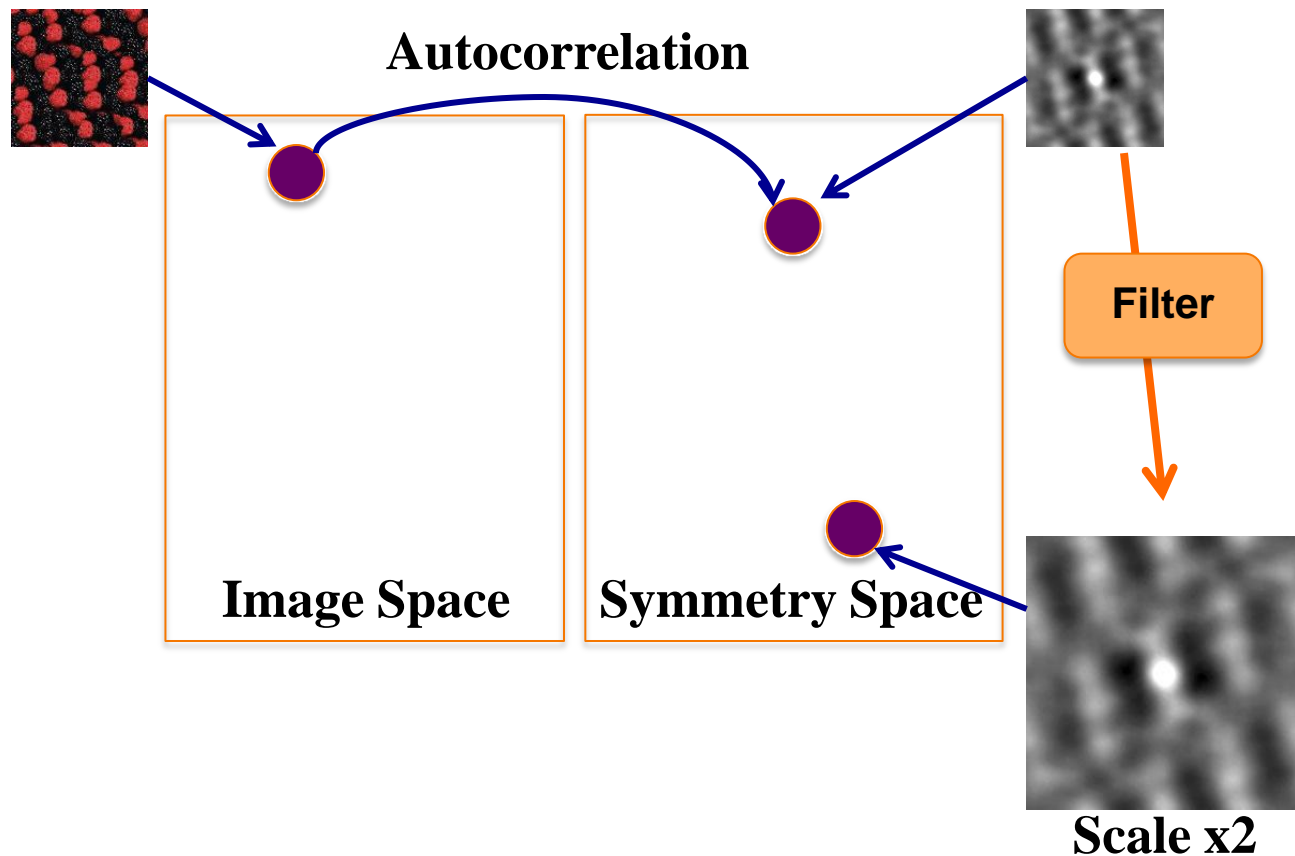
Optimization Example

Represent large-scale patterns with approximate symmetry representations



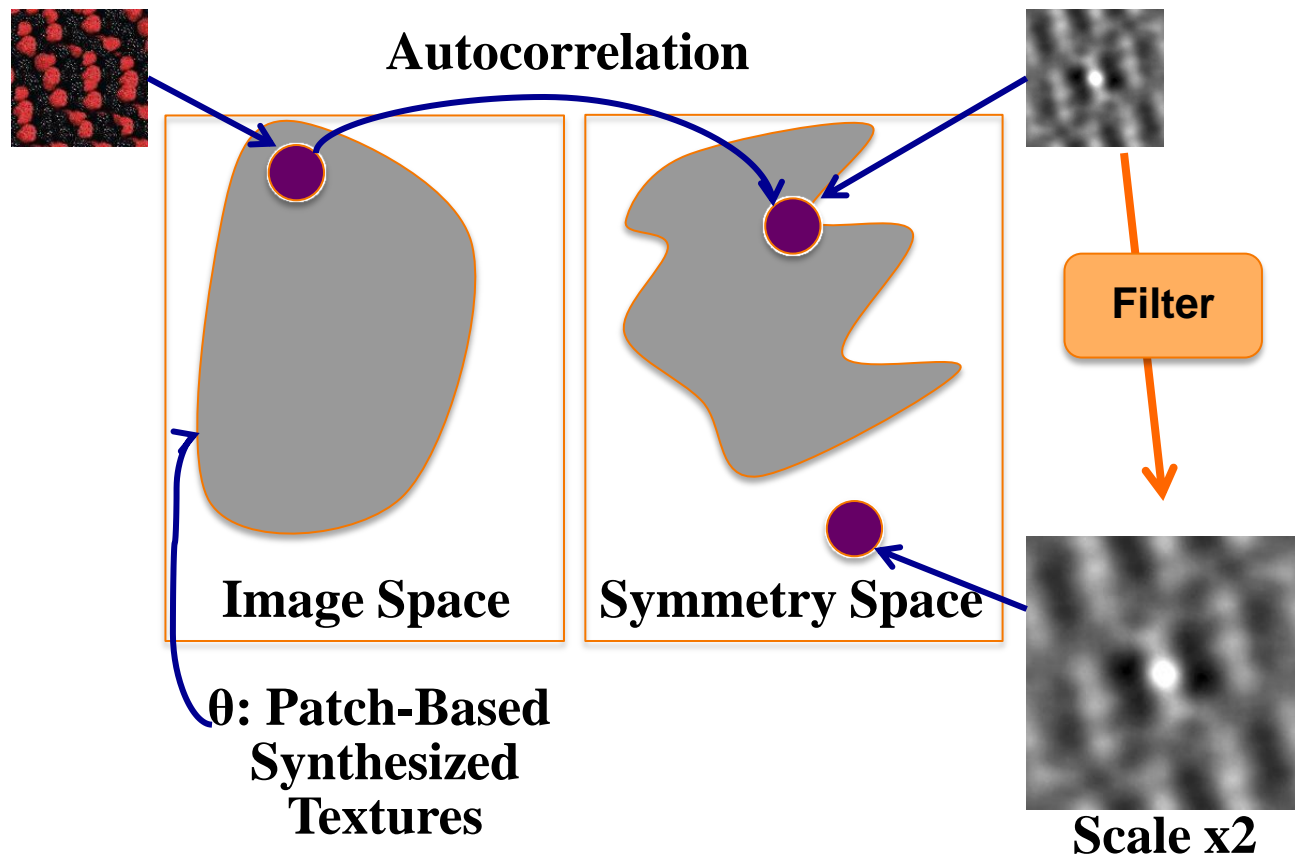
Optimization Example

Represent large-scale patterns with approximate symmetry representations



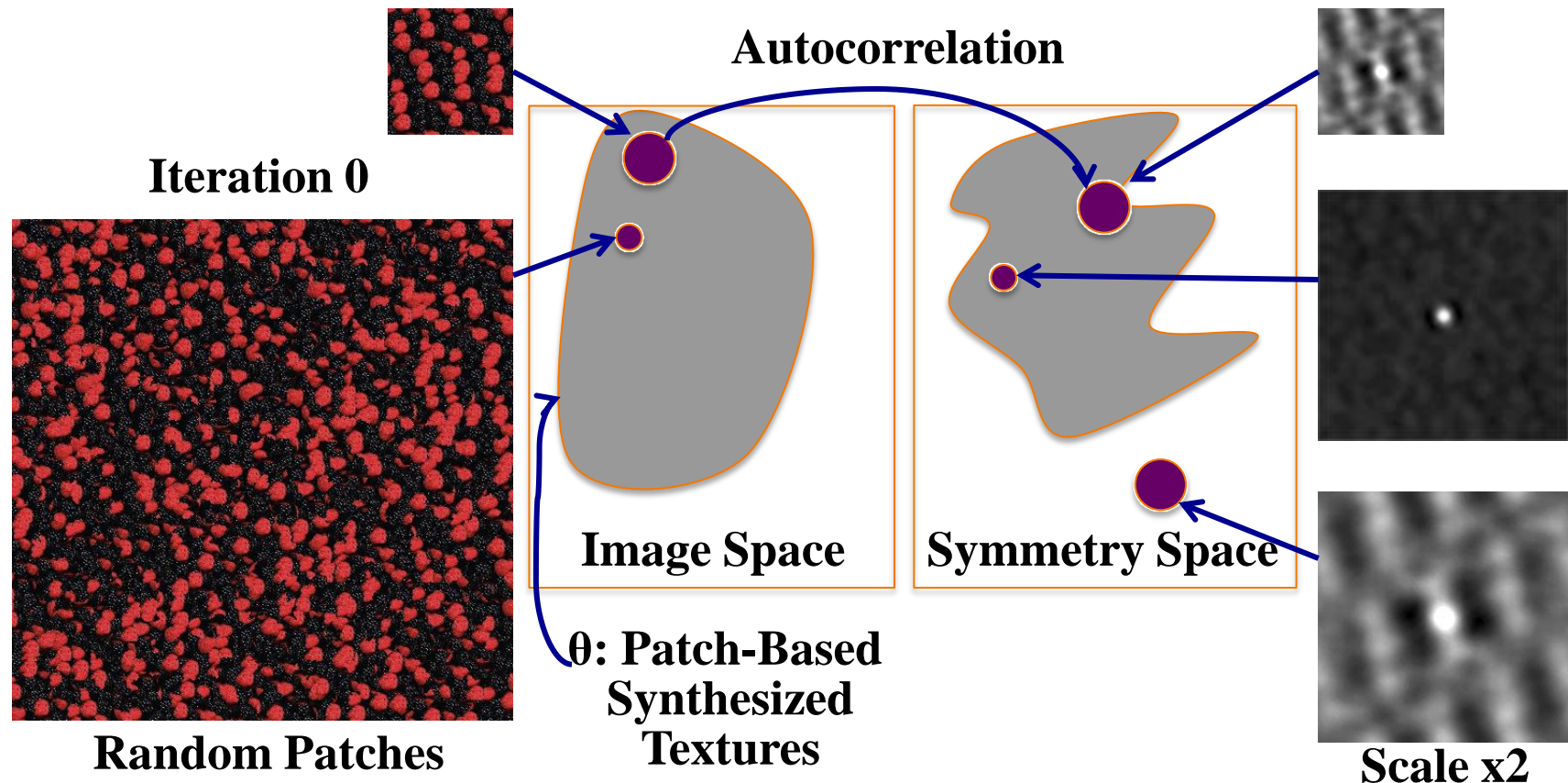
Optimization Example

Represent large-scale patterns with approximate symmetry representations



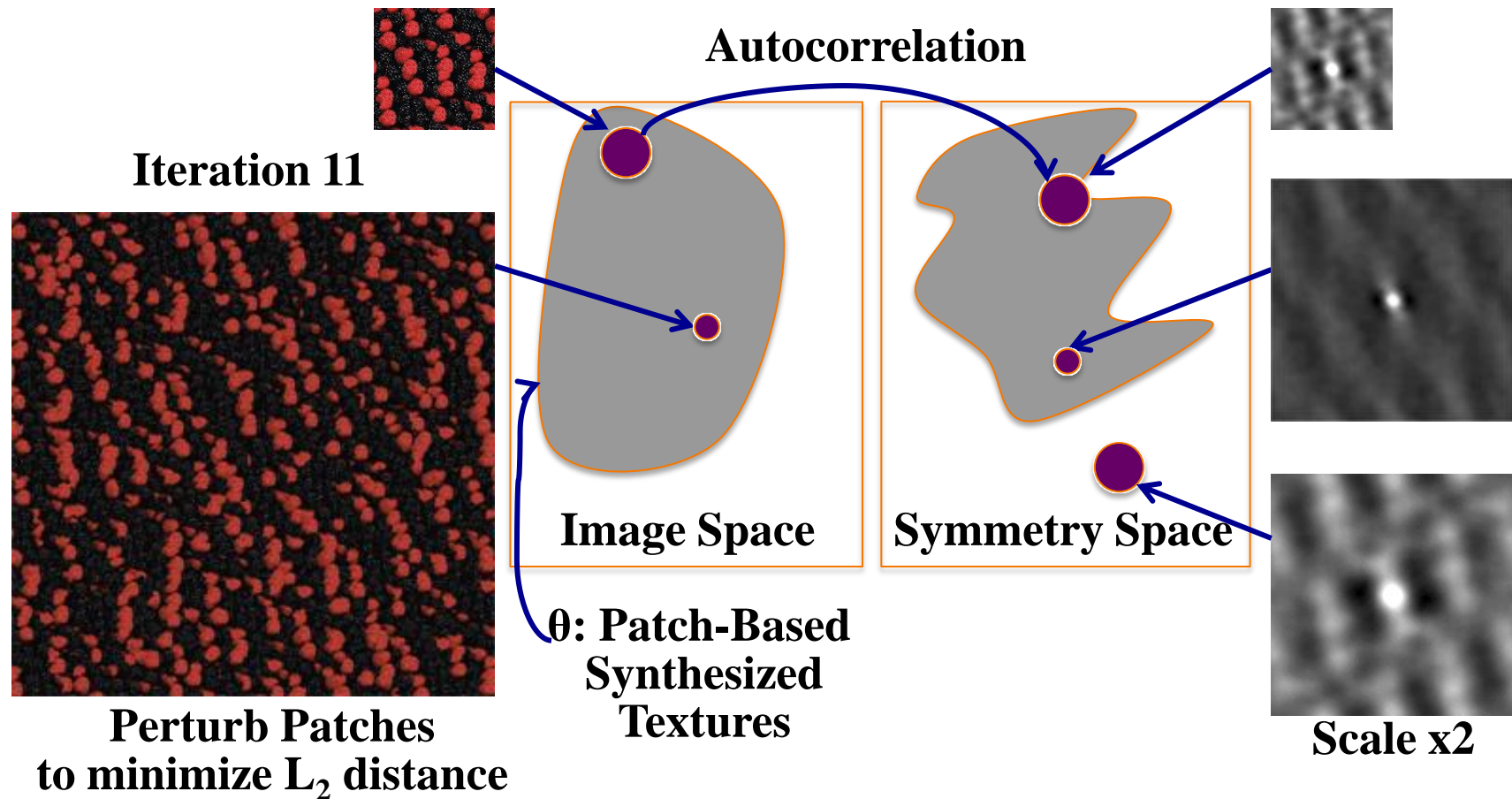
Optimization Example

Represent large-scale patterns with approximate symmetry representations



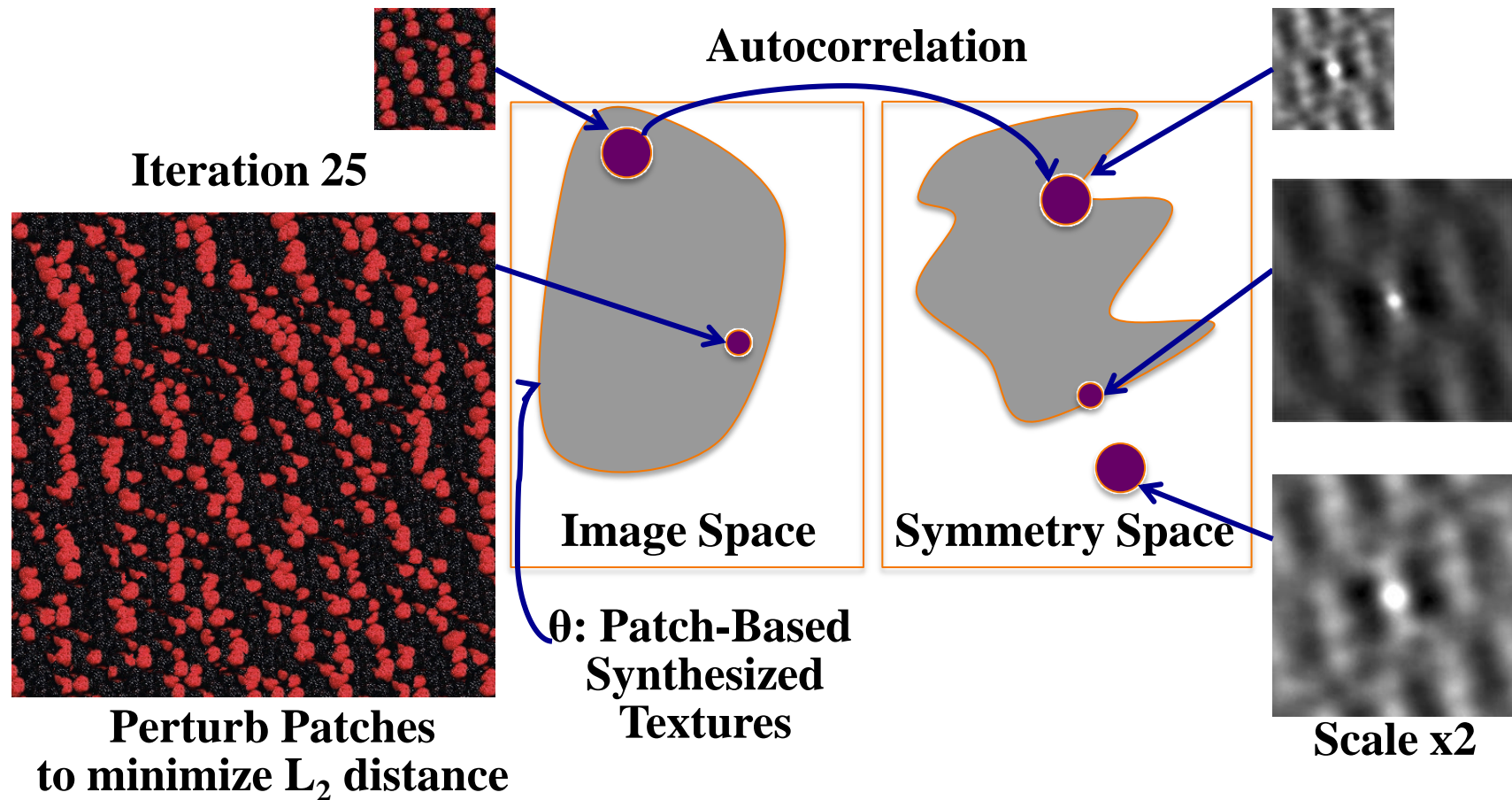
Optimization Example

Represent large-scale patterns with approximate symmetry representations

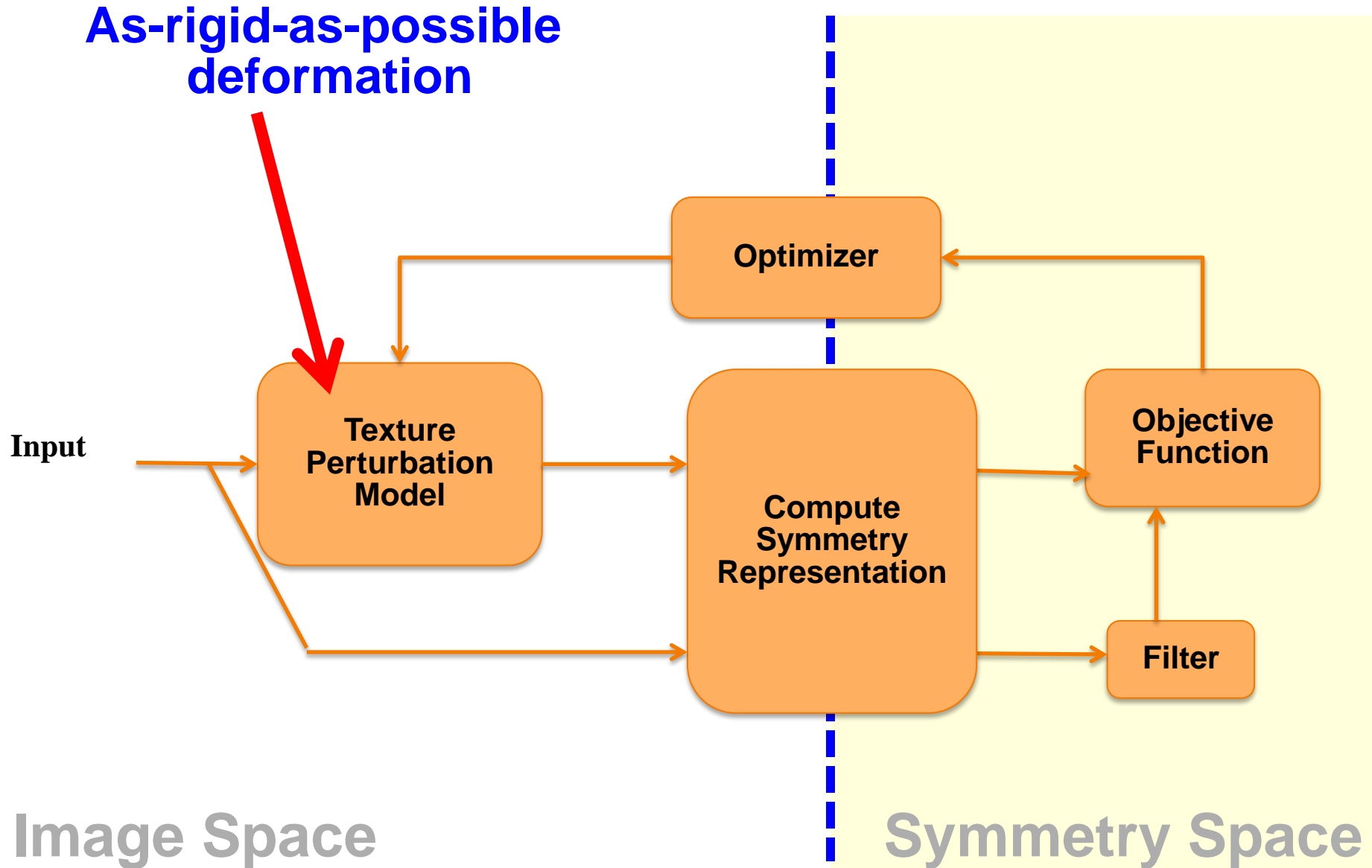


Optimization Example

Represent large-scale patterns with approximate symmetry representations

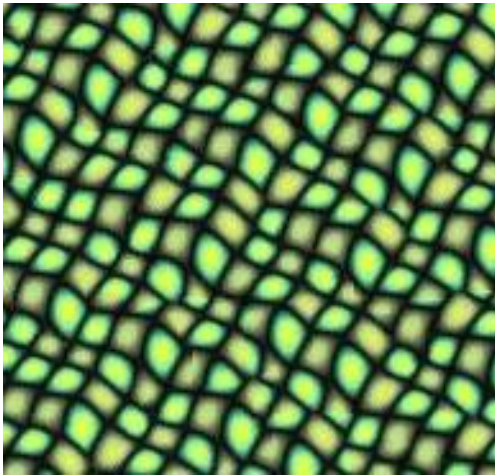


Pattern Processing: Warping Texture

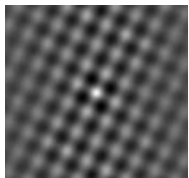
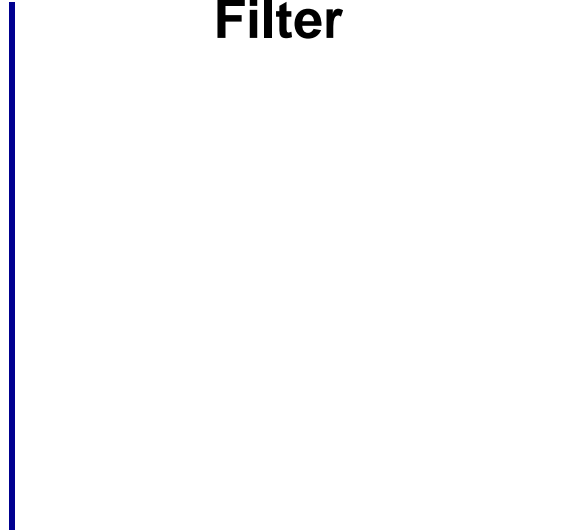


Pattern Processing: Sharpen

Input



Filter



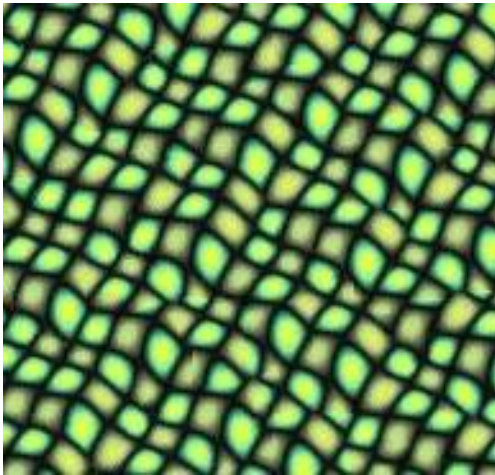
Symmetry
Representation



Sharpen

Pattern Processing: Sharpen

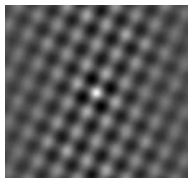
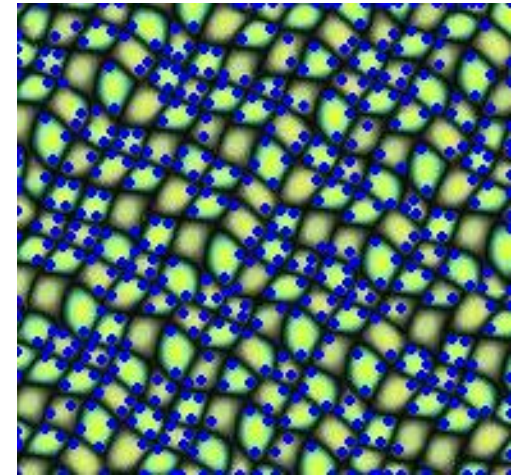
Input



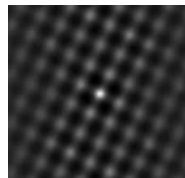
Filter



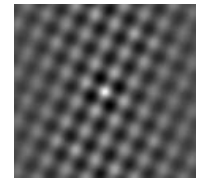
Texture
Perturbation



Symmetry
Representation

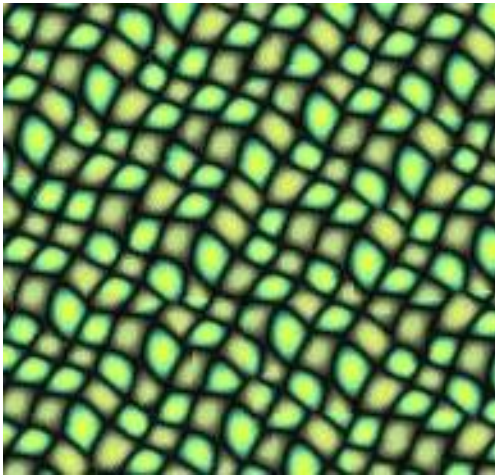


Sharpen



Pattern Processing: Sharpen

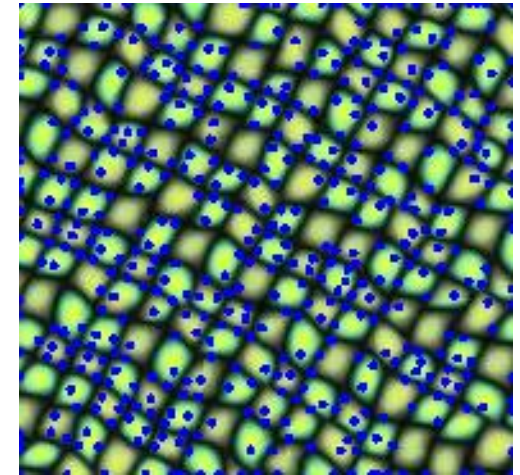
Input



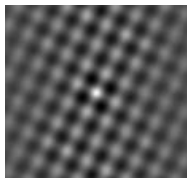
Filter



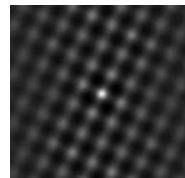
Texture
Perturbation



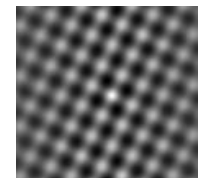
Iteration 2



Symmetry
Representation

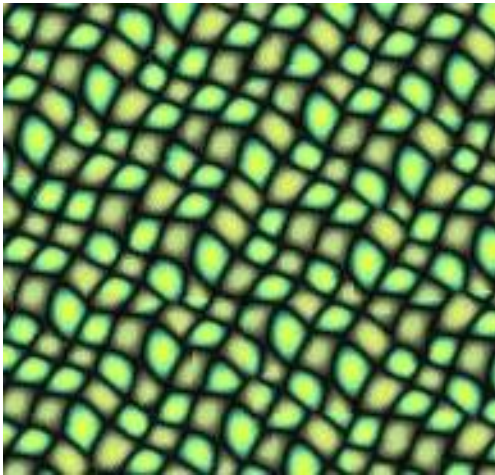


Sharpen



Pattern Processing: Sharpen

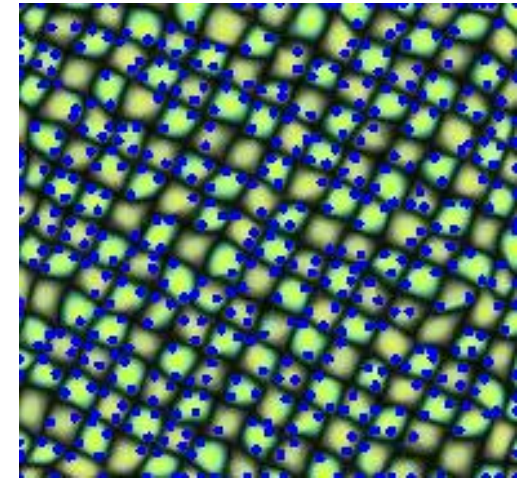
Input



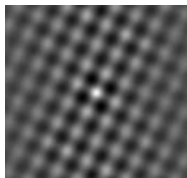
Filter



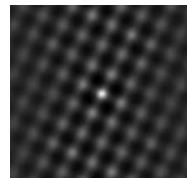
Texture
Perturbation



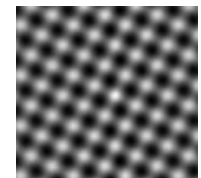
Iteration 5



Symmetry
Representation

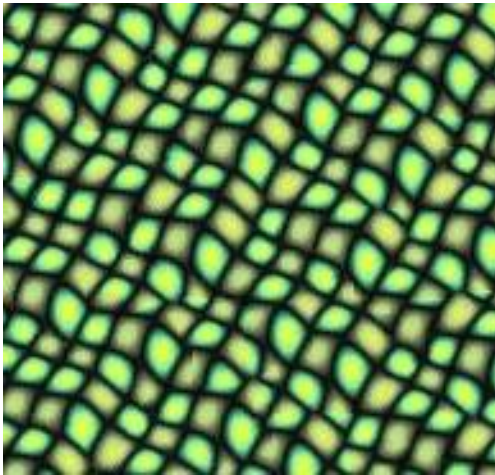


Sharpen



Pattern Processing: Sharpen

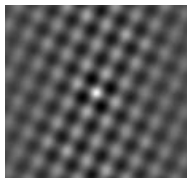
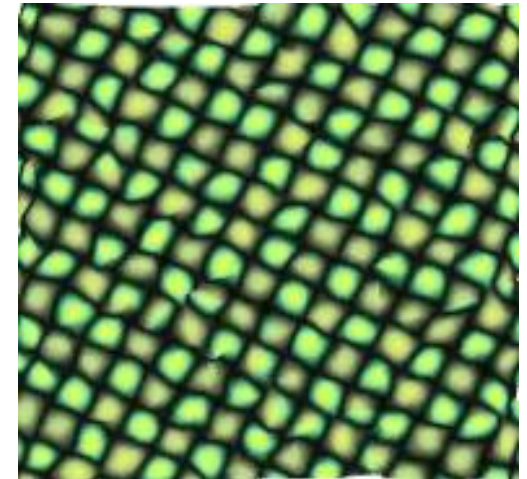
Input



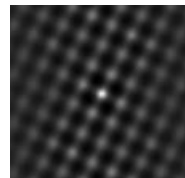
Filter



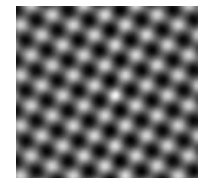
Result



Symmetry
Representation

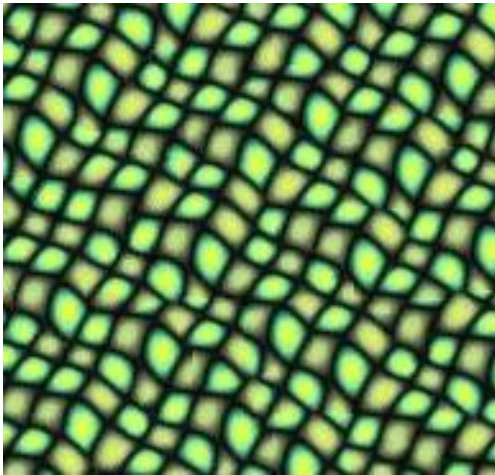


Sharpen



Pattern Processing: Blur G(2)

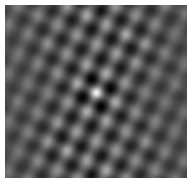
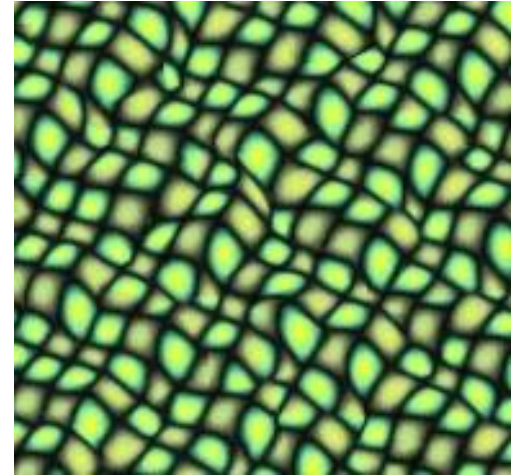
Input



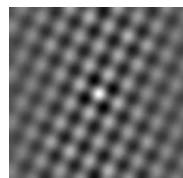
Filter



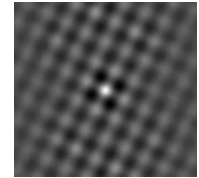
Result



Symmetry
Representation

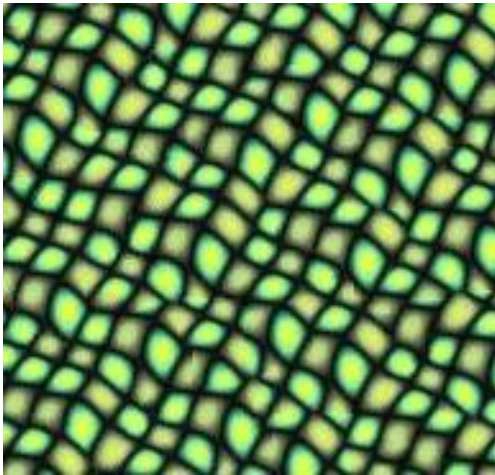


Blur G(2)



Pattern Processing: Blur G(4)

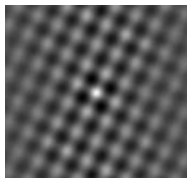
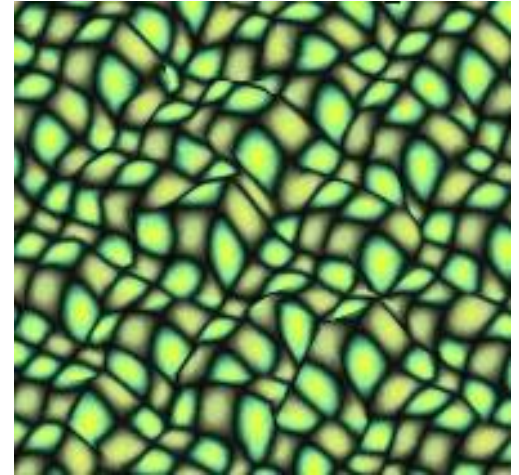
Input



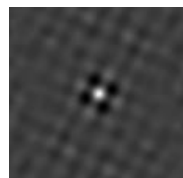
Filter



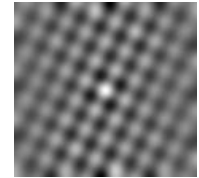
Result



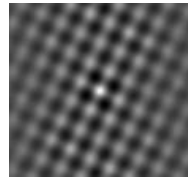
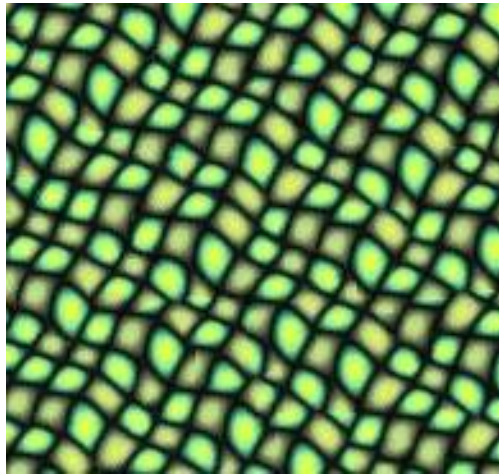
Symmetry
Representation



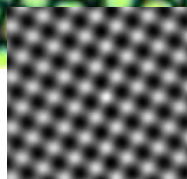
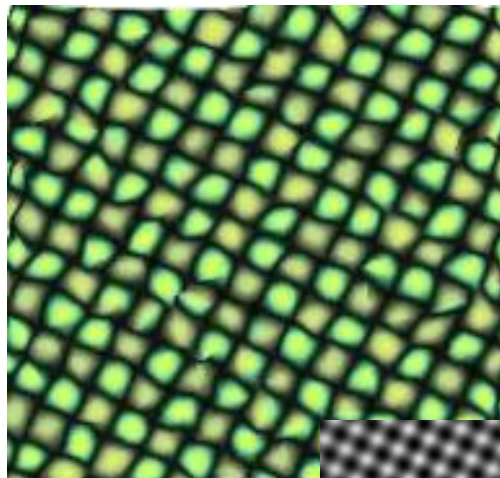
Blur G(4)



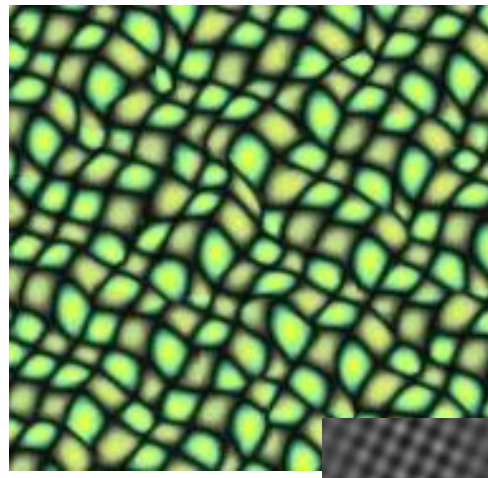
Pattern Processing: Sharpen / Blur



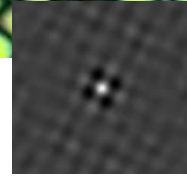
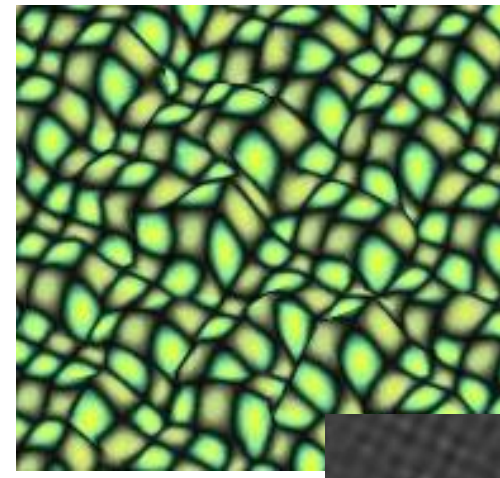
Input



Sharpen



Blur G(2)



Blur G(4)

Applications

Pattern Processing

Pattern Transfer

Pattern Optimization

Pattern Transfer: Goal

Transfer pattern of texture g to texture f



© shallowend24401

Texture: f

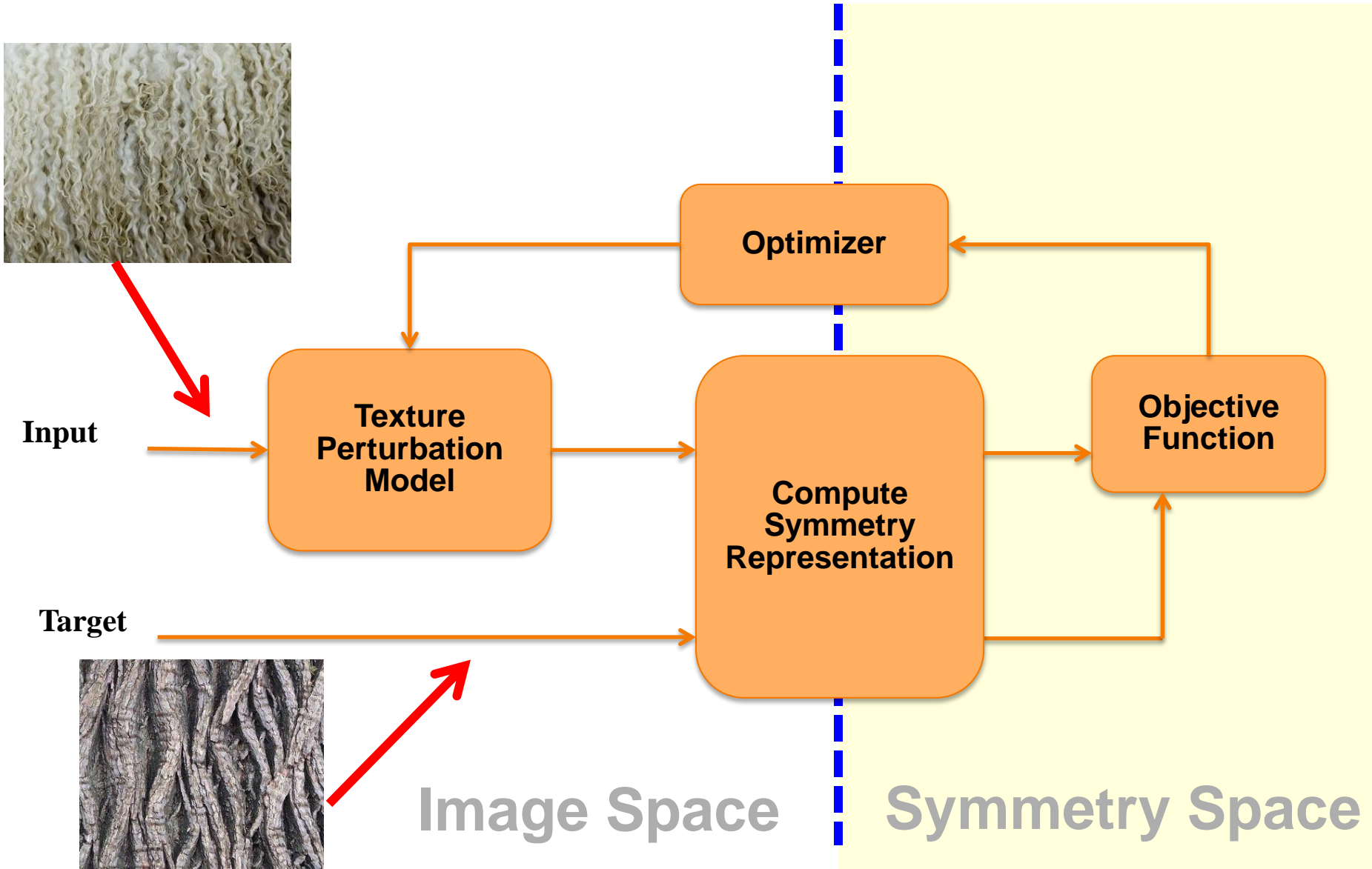


Pattern: g



Result: f'

Pattern Transfer



Pattern Transfer From a Sketch

Target
Pattern

Source
Texture:



© shallowend24401



© euart



Result



Result

Pattern Transfer From a Sketch

Target
Pattern

Source
Texture:



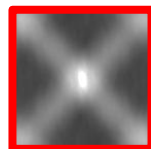
© shallowend24401



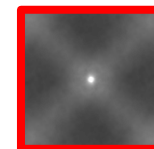
© euart



Result



Result



Pattern Transfer From a Sketch

Target
Pattern

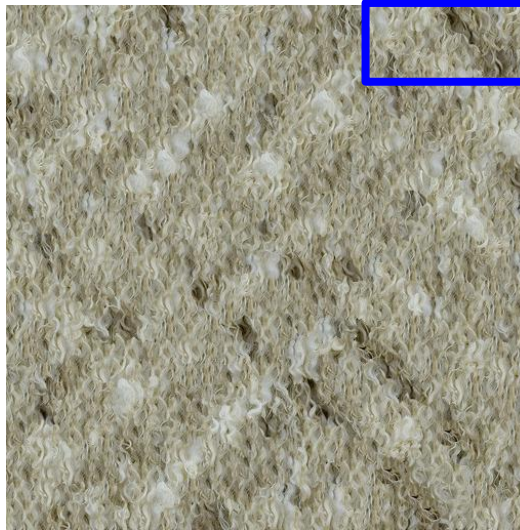
Source
Texture:



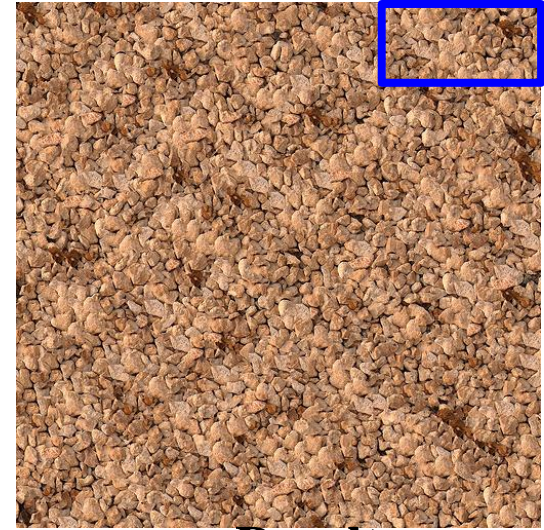
© shallowend24401



© euart



Result



Result



Pattern Transfer From an Image

Target
Pattern

Source
Texture:



© shallowend24401



© 100kr



Result



Result

Pattern Transfer From an Image

Target
Pattern

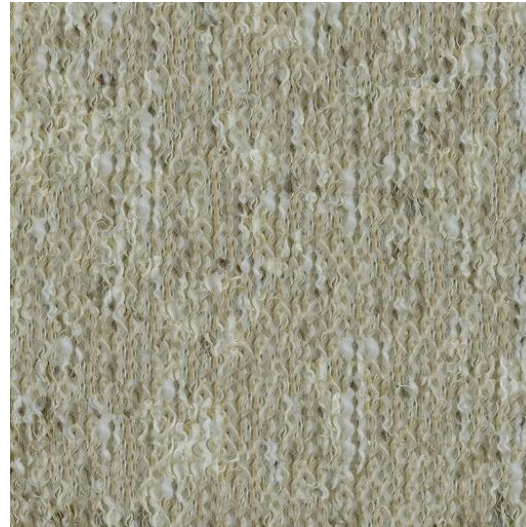
Source
Texture:



© shallowend24401



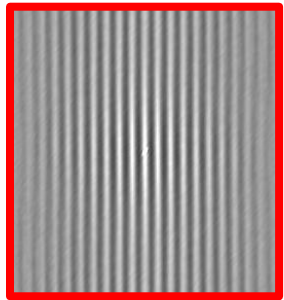
© 100kr



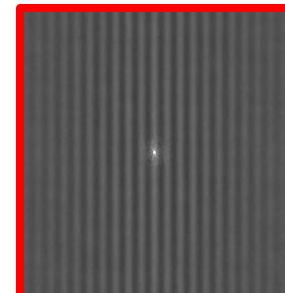
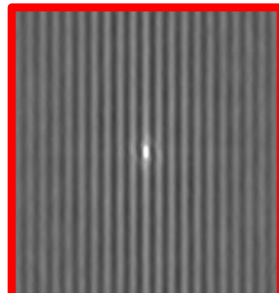
Result



Result



Symmetry



Pattern Transfer From an Image

Target
Pattern

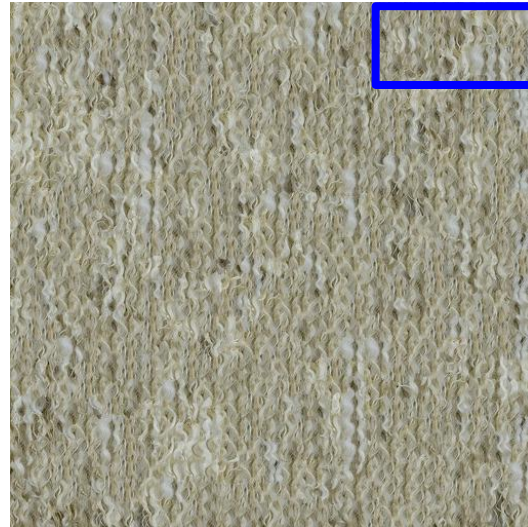
Source
Texture:



© shallowend24401



© 100kr



Result



Result



Applications

Pattern Processing

Pattern Transfer

Pattern Optimization

Pattern Optimization: Goal

Optimize function defined over symmetry representation, e.g.

- Symmetrize



Input

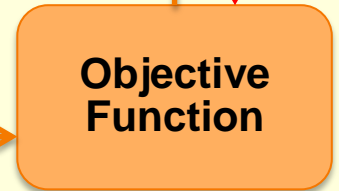
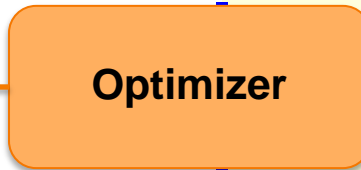
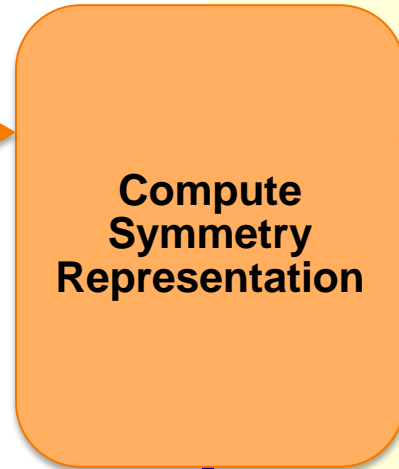


Symmetrized

Pattern Optimization



Input



Maximize standard
Deviation of
symmetry
representation



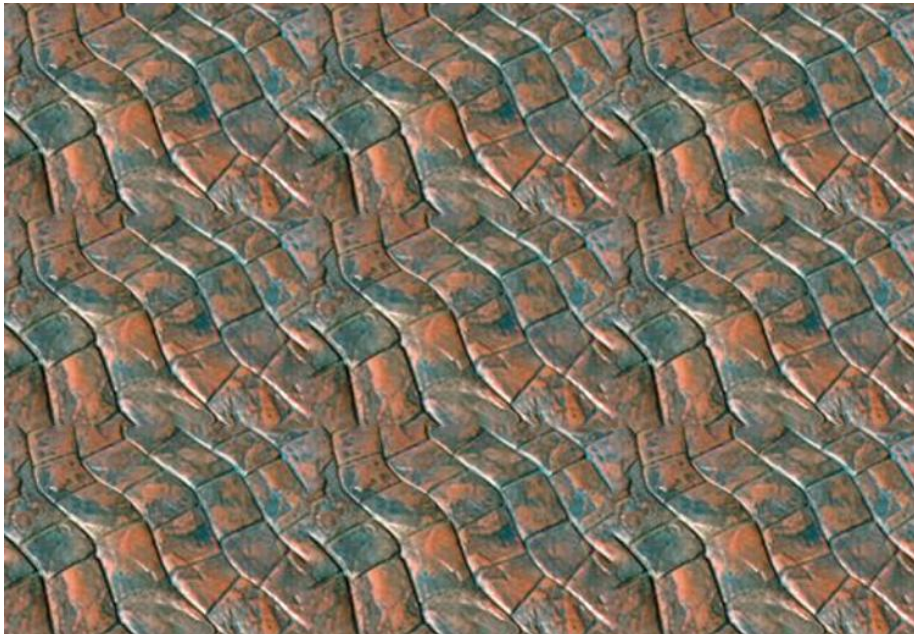
Image Space

Symmetry Space

Pattern Optimization: Tileable Texture



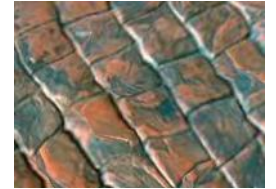
Blend edges + tile



Pattern Optimization: Tileable Texture



Symmetrize



Blend edges + tile



Pattern Optimization: Tileable Texture



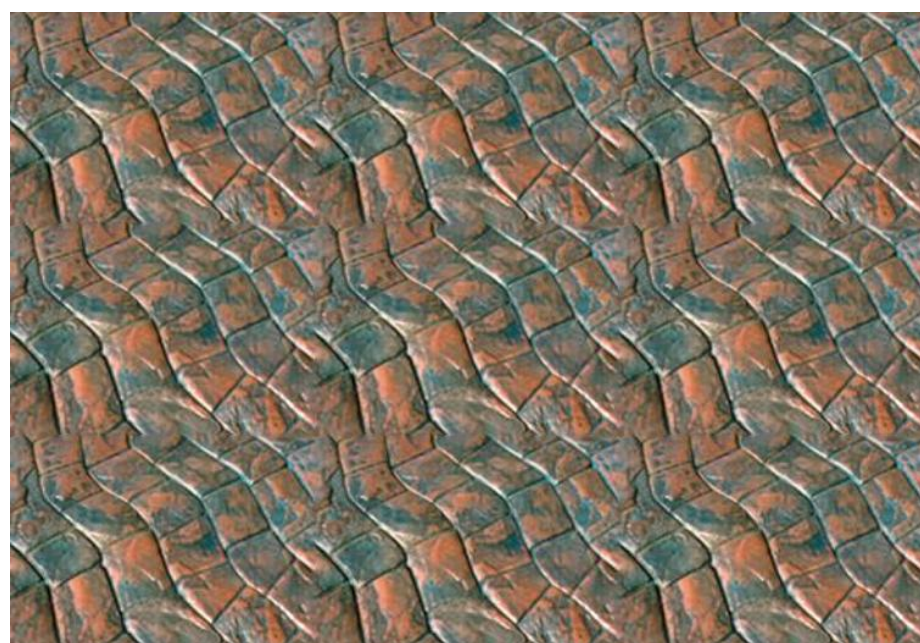
Symmetrize



Blend edges + tile



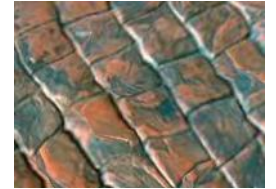
Blend edges + tile



Pattern Optimization: Tileable Texture



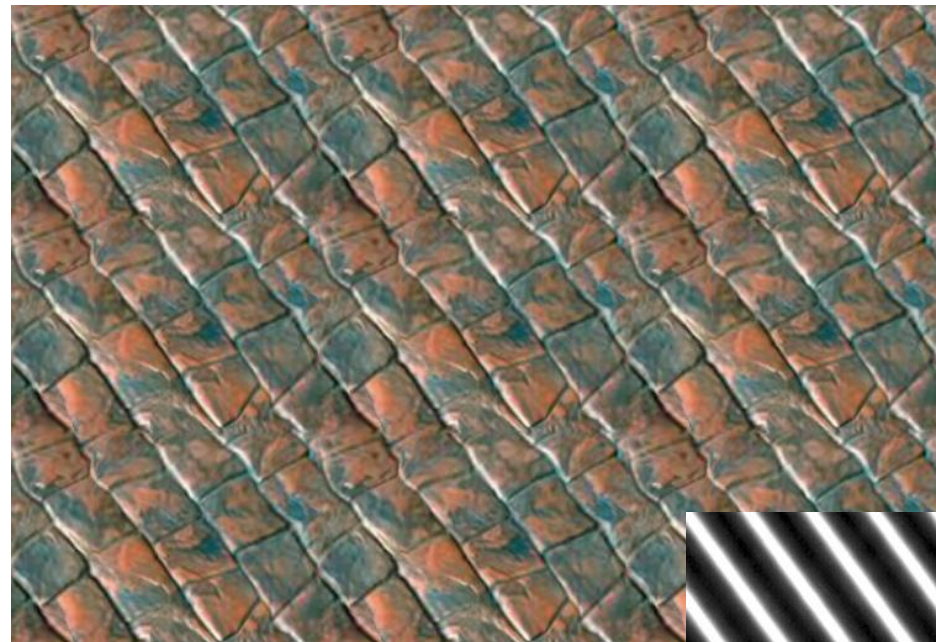
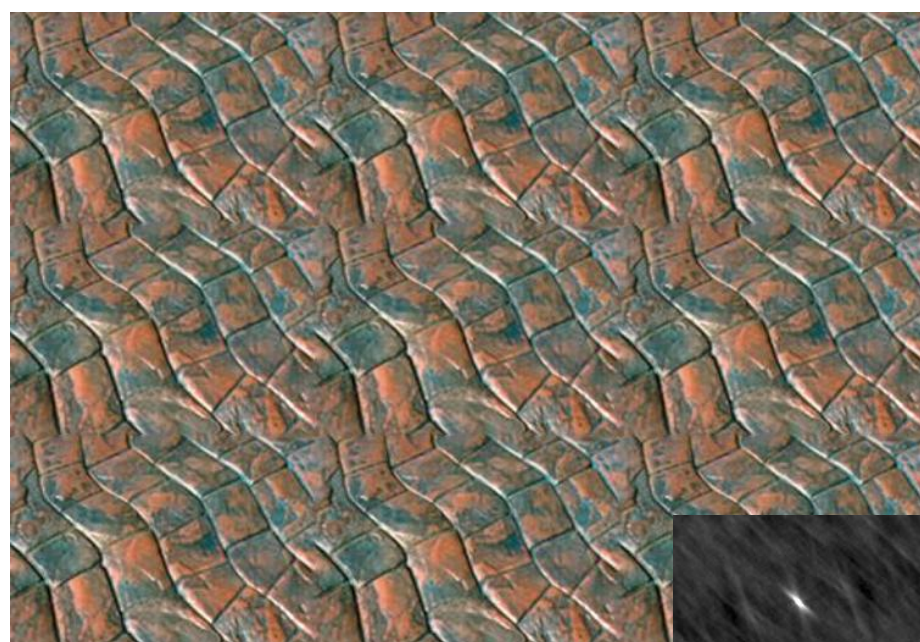
Symmetrize



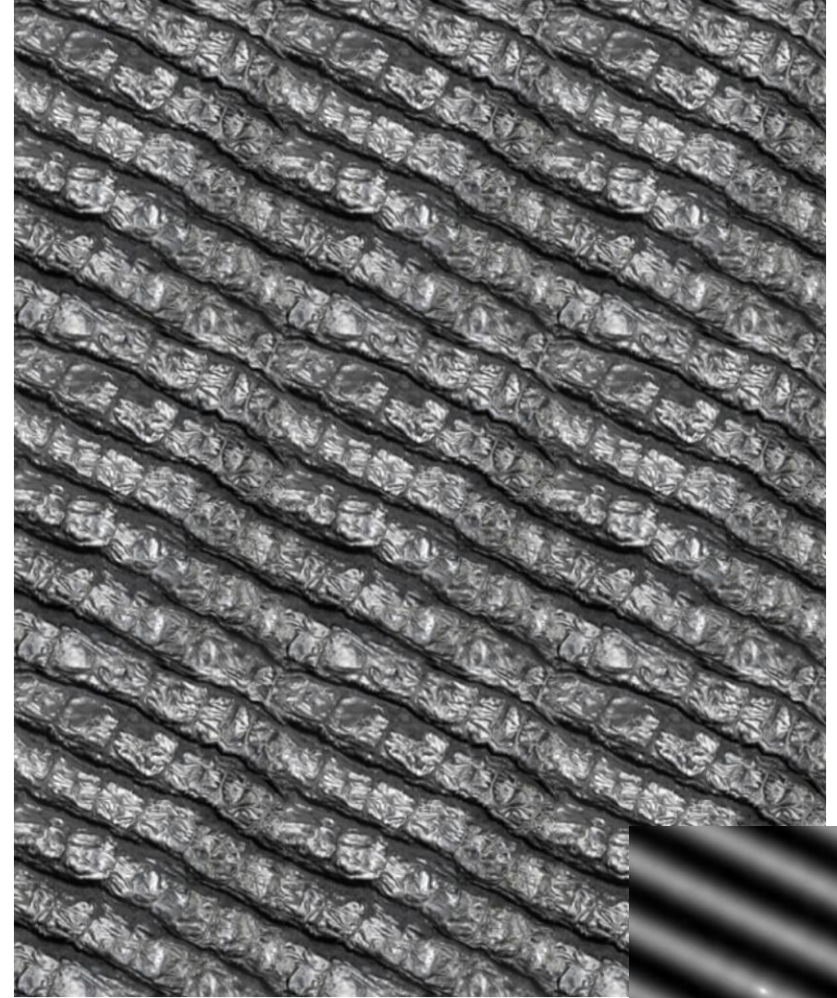
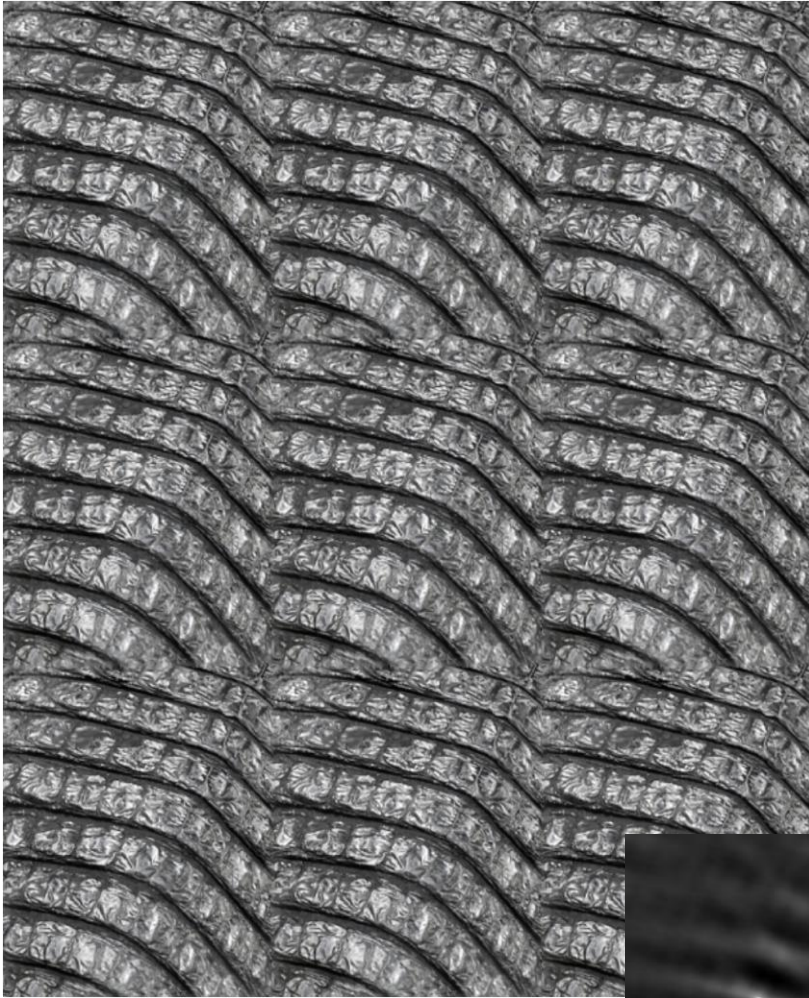
Blend edges + tile



Blend edges + tile

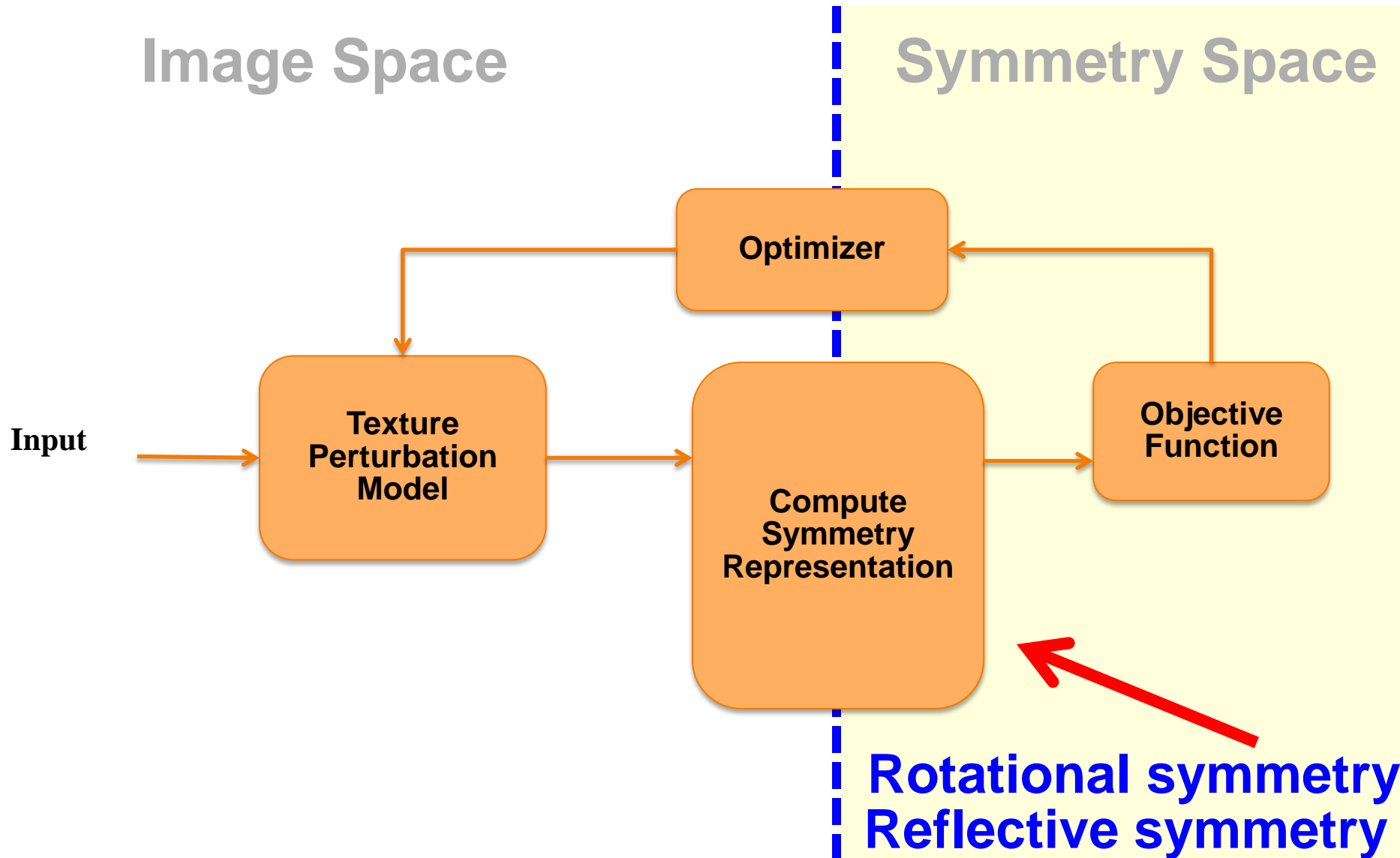


Pattern Optimization: Tileable Texture



© David Brennan

Pattern Optimization



Pattern Optimization: Rotational



© Martin Heigan

Input Image

Pattern Optimization: Rotational



© Martin Heigan

Symmetrized

Pattern Optimization: Reflectional



© John Perivolaris

Input Image

Pattern Optimization: Reflectional



© John Perivolaris

Symmetrized

Timing

Most of the time is spent on iterative computation of a symmetry transform



Total Time \approx 1hr



Total Time \approx 30min

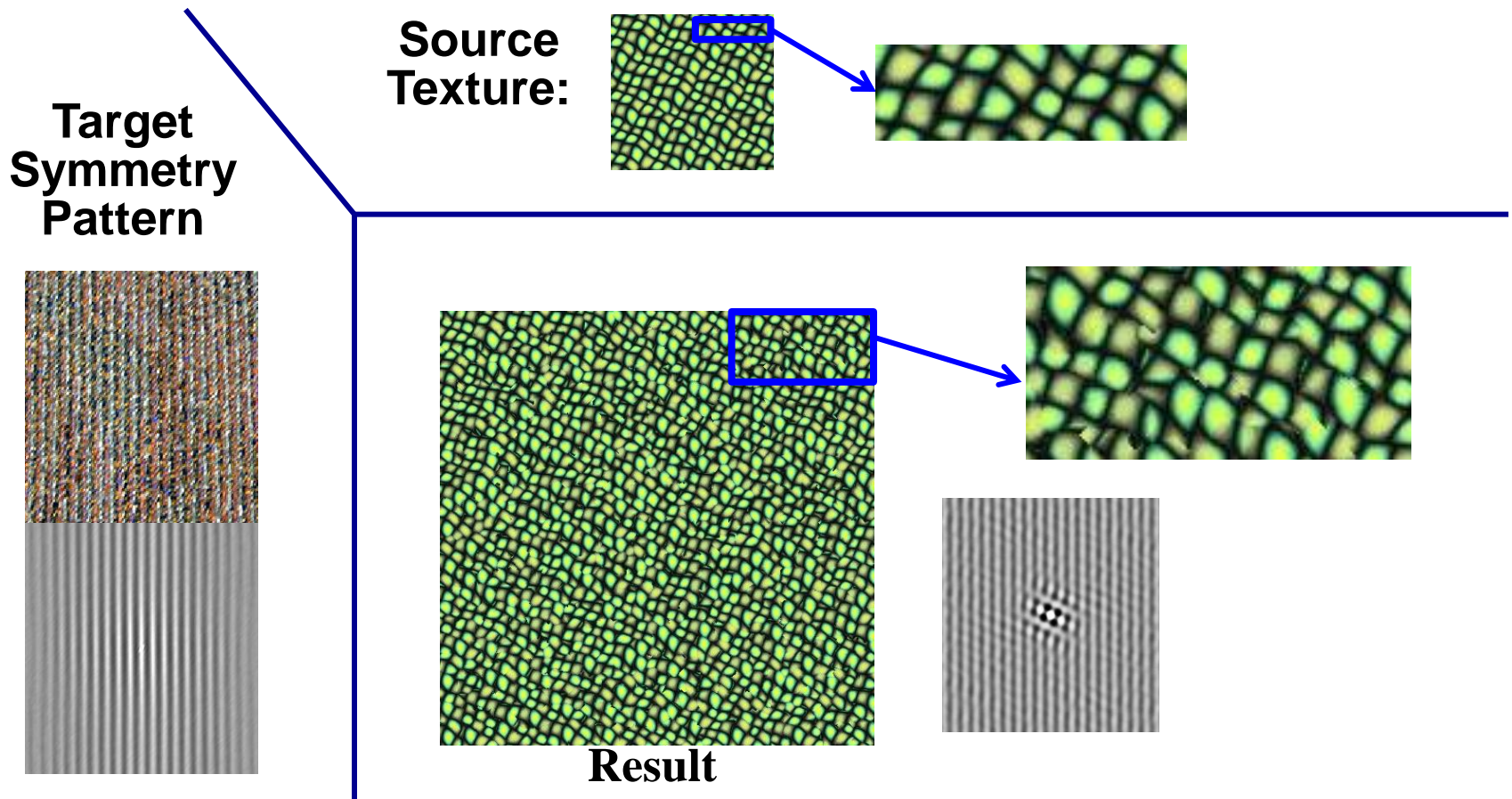
Summary

General framework for operating on textures in symmetry space

Investigated applications: pattern transfer, pattern filtering and pattern optimization

Limitations

Must be gap in size between fine-scale details and large-scale pattern



Future work

Other applications

- Symmetry-guided manipulation of 3D geometries

Acknowledgements + Project Website

Code and Data:

- Flickr: shallowend, dolescum, C. Lewis (cloois), 100kr, snappa2006, cwazymandy, D. Brennan (davidbrennan), J. Perivolaris (dr_john2005), M. Heigan (martin_heigan)
- CMU NRT database
- Code (for comparison): J. Hays, M. Park, Y. Liu

Funding:

- Google, Intel, Adobe, NSERC, NSF

Project Website (code, data, and examples):

<http://www.cs.princeton.edu/~vk/SymmetryTexture>

Thank You!